

L2TLV Tri-Level Motion Sensor LED Strip

The L2TLV series LED strip lights feature an integrated tri-level microwave motion sensor that regulates light levels according to the occupancy of a space. These luminaires have been specially designed to prevent energy loss and to increase energy savings, by allowing the end-user to sensibly manage the degree of luminosity in applications or spaces that require continuous lighting, such as hallways and common areas. Take advantage of the DLC Premium listing for additional energy savings and maximum rebates!



■ Integrated Motion Sensor

A microwave motion sensor with tri-level, bi-level, On/Off and daylight harvesting capabilities. Sensor settings are field adjustable to meet the specific lighting needs of all spaces. The sensor is mounted behind the lens, avoiding bulky and intrusive externally mounted sensors.

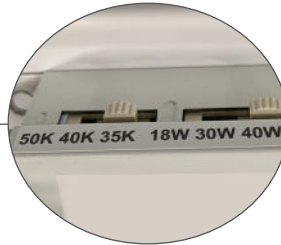
■ Colour and Power Selectable

Versatile LED strip luminaires with the ability to adapt to the colour temperature (3 500/4 000/5 000 K) and lumen output requirements for a variety of projects and applications. A single SKU can now replace up to 18 individual luminaires - a distributor's best friend!

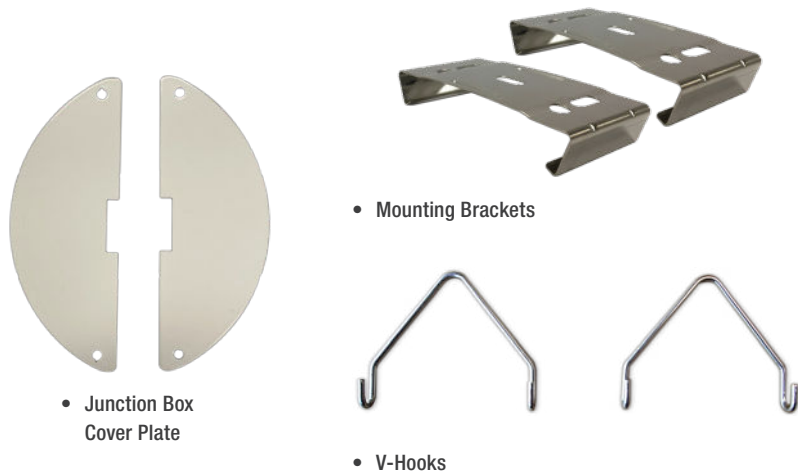
■ 120-347 V

Say goodbye to stocking both 120-277 V and 347 V configurations and never worry about sending the wrong voltage to a job site – our drivers function automatically between 120 V and 347 V.

L2TLV - At a Glance



Included with Every Luminaire!

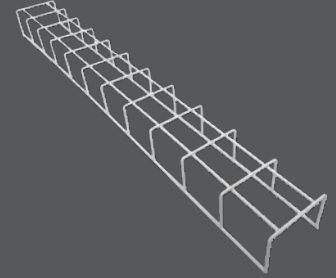


* The placement of the switches may vary depending on the model of the luminaire.

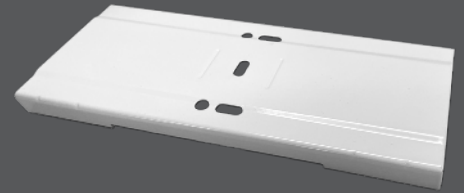
Accessories (Sold Separately)

Take your L2TLV Series luminaires to the next level with these accessories!

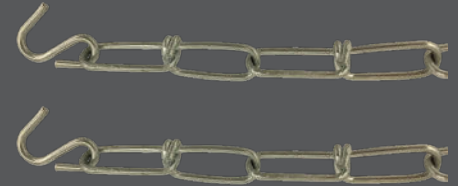
Wire Guards



Continuous Row Mounting Connector



Suspension Chain Kit



Remote Control for Motion Sensor



Looking for Regular LED Strip Lights?

Check out the L2STN Series!

