

CDL-L

HAZARDOUS LOCATION LED LINEAR LUMINAIRE

Class I, Division 2, Groups A, B, C, D

Class II, Division 1, Groups E, F, G

Class III

Non recessed Marine luminaires, outside type (salt water)

The CDL-L Hazardous Location LED linear luminaire is designed for installations where moisture, dirt, dust, corrosion and vibration may be present. The CDL-L is also NEC/CEC certified to be used in hazardous environments where there is presence of flammable vapors or gases.

FEATURES AND SPECIFICATIONS

• Construction

Housing

Rugged and resilient housing made of a copper-free aluminum, corrosion resistant casting, with separated driver compartment for improved thermal management. All exposed fasteners are quality stainless steel as well as high temperature quality silicone gasketing. Available in a grey casting color and a superior electrostatic powder coating.

Temperature ratings

Based on the surface temperature of the fixture;

- Class I, Division 2 is rated T3C (will not exceed 160°C)
- Class II, Division 1 & Class III are rated T4A (will not exceed 120°C)

Ambient operating temperature

-40°C to +50°C

Ambient operating humidity

5% ~ 95% RH

Optics

Comes standard with a thermal shock and impact resistant polycarbonate lens and is available in a clear finish with a 110° beam angle. A diffuse finish is also available in option.

• Electrical

Available in either A1 (40 W) or A2 (80 W) configurations with a lumen per watt ratio of 120 to 152 lm/W. Driver input voltage is 120-277 V 50/60 Hz, or 347-480 V 50/60 Hz. All drivers are non-dimmable and have 4 kV integrated transient surge protection with a power factor >0.95. Durable high LUXEON LEDs with solder-less board connections for shock and vibration resistance. The CDL-L is offered in either 3 000, 4 000 and 5 000 K, with a color rendering index (CRI) >70.

• NEC/CEC Standards

NEC500/CEC Section 18: Existing plants

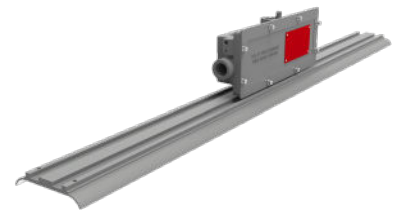
- Hazloc C
- Class I, Division 2, Groups A, B, C, D
- Class II, Division 1, Groups E, F, G
- Class III

NEC505/CEC Section 18 Zones: New plants

- Hazloc C
- Class I, Zone 2, Group IIC
- Zone 21

• Compliances

- Meets requirements of ICES-005 issue 4 for class A products
- 5G vibration resistant in compliance with IEC60598-1 standard, CL-4.20
- IP66
- IK08
- UL1598A
- UL1598
- UL8750
- CSA C22.2 No.137
- CSA C22.2 No.250, No.250.13



OVERVIEW

Light source	LED
Watts (W)	40 - 80
Lumen output (lm)	4 850 - 12 231
Efficacy (lm/W)	120 - 153
Color temperature (K)	3 000, 4 000, 5 000
CRI	>70



quick ship



LED fixture



ICES 005

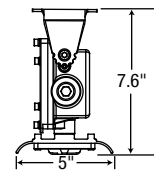
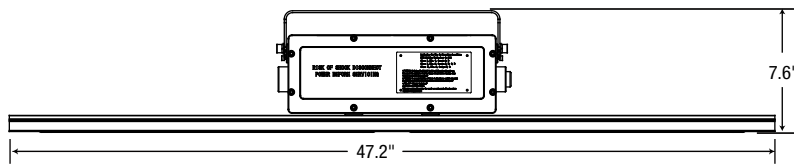
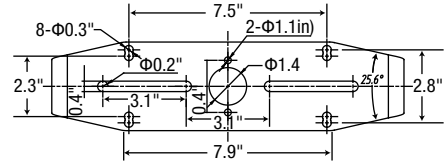
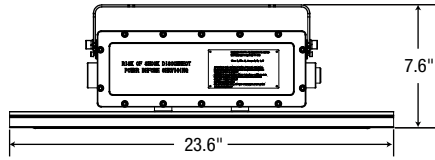


IK08



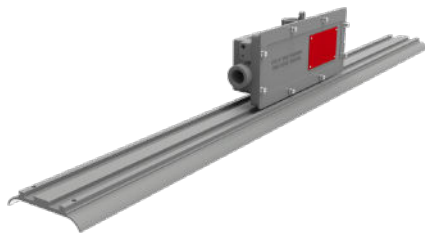
DIMENSIONS

Part #	Net weight (lbs)	Dimensions (LxWxH)
CDL-LS1	12.1	23.6 x 5 x 7.6"
CDL-LS2	16.7	47.2 x 5 x 7.6"



MOUNTING

PENDANT (STANDARD)



ACCESSORIES REQUIRED FOR OPTIONAL MOUNTING

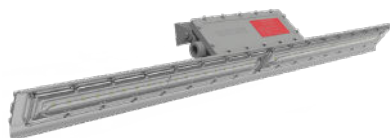
CEILING MOUNT

BKT761-LN



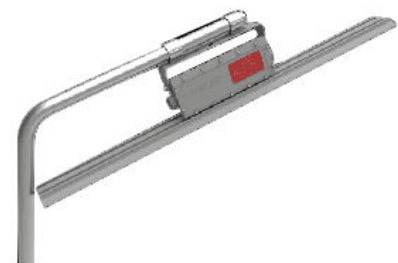
WALL MOUNT

BKT761-LN



POLE MOUNT

BKT775 + BKT761-LN



Data is based upon tests performed in a controlled environment. Actual performance can vary depending on operating conditions. All products are subject to change or may be discontinued any time without notice.

QUICK SHIP AND TECHNICAL SPECIFICATION TABLE  ¹

Part number	Watts (W)	Color temp. (K) ²	Lumen output (lm) ³	Efficacy (lm/W)	CRI	Life L70 (hrs) ⁴	Tested hours LM-80 (hrs) ⁴	LED current (mA)	Power factor	THD (%)	B.U.G. rating	Beam angle (°)	Case qty (master)
120-277 V													
CDL-LS1-W-C/40K-T	40	4 000	6 041	151	70	>54 000	9 000	84	1.00	16	B4-U0-G1	110	1
CDL-LS2-W-C/40K-T	80	4 000	12 231	153	70	>54 000	9 000	84	0.99	9	B4-U0-G1	110	1
CDL-LS1-W-C/50K-T	40	5 000	5 480	135	70	>54 000	9 000	84	1.00	16	B4-U0-G1	110	1
CDL-LS2-W-C/50K-T	80	5 000	10 960	137	70	>54 000	9 000	84	0.99	9	B4-U0-G1	110	1
347-480 V													
CDL-LS1-H-C/40K-T	40	4 000	5 984	150	70	>54 000	9 000	84	0.89	16	B4-U0-G1	110	1
CDL-LS2-H-C/40K-T	80	4 000	11 761	147	70	>54 000	9 000	84	0.89	9	B4-U0-G1	110	1
CDL-LS1-H-C/50K-T	40	5 000	5 480	132	70	>54 000	9 000	84	0.89	16	B4-U0-G1	110	1
CDL-LS2-H-C/50K-T	80	5 000	10 960	137	70	>54 000	9 000	84	0.89	9	B4-U0-G1	110	1

¹ **QUICK SHIP:** Product availability is subject to change without notice. Please contact your Stanpro customer service representative to confirm inventory levels at time of order.

² Typical color temperature range: +/- 5 %.

³ Lumen values are derived from photometric testing. Initial lumens range: +/- 10 %.

⁴ Life hours are derived from IESNA LM-80-08 testing report and projected per IESNA TM-21-11 extrapolations.

ORDERING GUIDE

Series	Lamp type	Lumen package ¹	Volts (V)	Hazloc	Color temp. (K)	Lens option
CDL	L - LED	S1 - Refer to the S2 - technical specifications table for details	W - 120-277 H - 347-480	C - Class I Division 2, Class II Division 1 Class III	30K - 3 000 40K - 4 000 50K - 5 000	D - Diffuse polycarbonate lens T - Transparent polycarbonate lens

¹ S1-40 W is a 2 ft fixture; S2-80 W is a 4 ft fixture.

ACCESSORIES (order separately)

Part number	Type
HAR1055	Stainless steel safety cable kit
BKT775	Stanchion mount pipe clamp ¹
BKT761-LN	U-bracket

¹ Include 2 pipes per box.



BKT775
Stanchion mount pipe clamp



BKT761-LN
U-bracket



HAR1055
Stainless steel safety cable kit

Data is based upon tests performed in a controlled environment. Actual performance can vary depending on operating conditions. All products are subject to change or may be discontinued any time without notice.

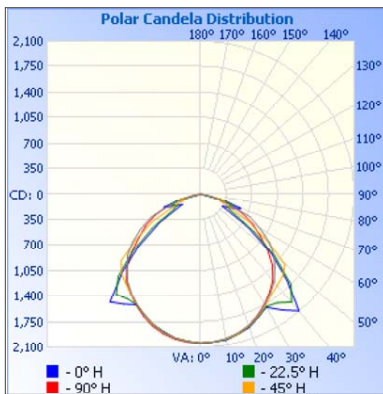
TECHNICAL SPECIFICATION TABLE

Lumen package	Lens type	Volts (V AC)	LED current (mA)	# of LEDs	Watts (W)	CRI	Lumens output (lm)	Efficacy (lm/w)	Life L70 (hrs)	Tested hours LM-80 (hrs)	Power factor	THD (%)	B.U.G. Rating
3 000 K													
S1	Transparent	120-277	84	18	40	70	6 061	152	54 000	9 000	1.00	16	B4-U0-G1
		347-480	84	18	40	70	6 061	152	54 000	9 000	0.89	16	B4-U0-G1
S2		120-277	84	36	80	70	11 598	145	54 000	9 000	0.99	9	B4-U0-G1
		347-480	84	36	80	70	11 598	145	54 000	9 000	0.89	9	B4-U0-G1
S1	Diffuse	120-277	84	18	40	70	5 210	130	54 000	9 000	1.00	16	B4-U0-G1
		347-480	84	18	40	70	5 210	130	54 000	9 000	0.89	16	B4-U0-G1
S2		120-277	84	36	80	70	9 847	123	54 000	9 000	0.99	9	B4-U0-G1
		347-480	84	36	80	70	9 847	123	54 000	9 000	0.89	9	B4-U0-G1
4 000 K													
S1	Diffuse	120-277	84	18	40	70	4 850	121	54 000	9 000	1.00	16	B4-U0-G1
		347-480	84	18	40	70	4 850	121	54 000	9 000	0.89	16	B4-U0-G1
S2		120-277	84	36	80	70	9 595	120	54 000	9 000	0.99	9	B4-U0-G1
		347-480	84	36	80	70	9 595	120	54 000	9 000	0.89	9	B4-U0-G1
5 000 K													
S1	Diffuse	120-277	84	18	40	70	5 270	132	54 000	9 000	1.00	16	B4-U0-G1
		347-480	84	18	40	70	5 270	132	54 000	9 000	0.89	16	B4-U0-G1
S2		120-277	84	36	80	70	9 931	124	54 000	9 000	0.99	9	B4-U0-G1
		347-480	84	36	80	70	9 931	124	54 000	9 000	0.89	9	B4-U0-G1

PHOTOMETRIC DATA¹

CDL-LS1-W-C/40K-T • 6 041 lm

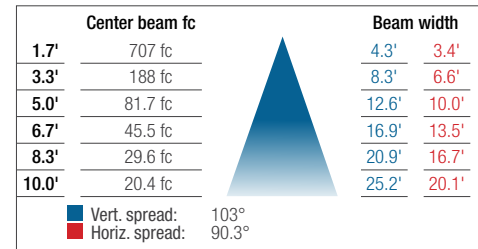
Polar candela distribution



Zonal lumen summary

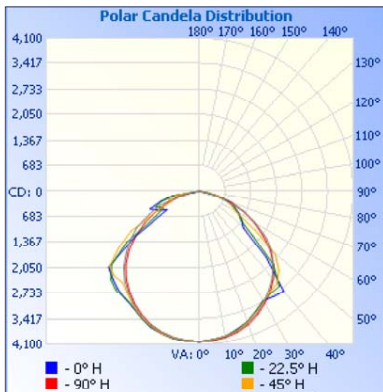
Zone	Lumens	% Fixture
0-30	1 598.1	28.5%
0-40	2 682.6	47.9%
0-60	4 750.2	84.7%
60-90	855.7	15.3%
0-90	5 605.9	100%

Illuminance at a distance



CDL-LS2-W-C/40K-T • 12 231 lm

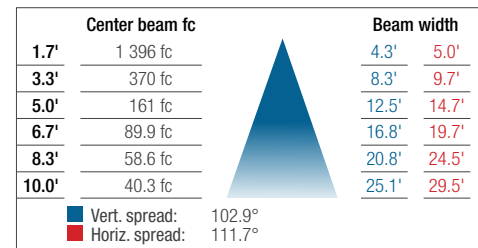
Polar candela distribution



Zonal lumen summary

Zone	Lumens	% Fixture
0-30	3 160.4	27.8%
0-40	5 263.3	46.4%
0-60	9 356.8	82.4%
60-90	1 995.3	17.6%
0-90	11 352.10	100%

Illuminance at a distance



¹ Complete IES files available on our website.

Data is based upon tests performed in a controlled environment. Actual performance can vary depending on operating conditions. All products are subject to change or may be discontinued any time without notice.