

## CDLA-L

### HAZARDOUS LOCATION LED LINEAR LUMINAIRE

Class I, Division 1, Groups C, D

Class I, Division 2, Groups A, B, C, D

Non recessed Marine luminaires, outside type (salt water)

The CDLA-L Hazardous Location LED linear luminaire is designed for installations where moisture, dirt, dust, corrosion and vibration may be present. The CDLA-L is also NEC/CEC certified to be used in hazardous environments where there is presence of flammable vapors or gases.

#### FEATURES AND SPECIFICATIONS

##### • Construction

###### Housing

Rugged and resilient housing made of a copper-free aluminum, corrosion resistant casting, with separated driver compartment for improved thermal management. All exposed fasteners are quality stainless steel. Available in a grey casting color and a superior electrostatic powder coating.

###### Temperature ratings

Based on the surface temperature of the fixture;

- Class I Division 1, Group C, D is rated T6
- Class I Division 2, Group A, B, C, D is rated T3C

###### Ambient operating temperature

-40°C to +60°C

###### Ambient operating humidity

10% ~ 90% RH

###### Lens and Optics

This luminaire is outfitted of a glass lens that comes in a transparent or a diffuse finish. Beam angles options of 60° and 110° are available as well as a type II distribution pattern.

##### • Electrical

Available in either S1 (40 W) or S2 (80 W) configurations with a lumen per watt ratio up to 133 lm/W. Driver input voltage is 120-277 V 50/60 Hz or 347 V 50/60 Hz with a power factor >0.95. Durable high LEDs with solder-less board connections for shock and vibration resistance. The CDLA-L is offered in either 3 000, 4 000 and 5 000 K, with a color rendering index (CRI) >70.

##### • NEC/CEC Standards

###### NEC500/CEC Section 18: Existing plants

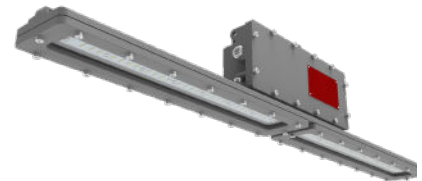
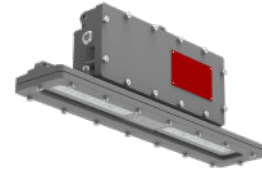
- Hazloc B :
  - Class I, Division 1, Groups C, D
  - Class I, Division 2, Groups A, B, C, D

###### NEC505/CEC Section 18 Zones: New plants

- Hazloc B
  - Class I, Zone 1, Group IIB
  - Class I, Zone 2, Group IIC

##### • Compliances

- Meets requirements of ICES-005 issue 4 for class A products
- 5G vibration resistant in compliance with IEC60598-1 standard, CL-4.20
- IP66
- UL1598A
- UL1598
- UL8750



#### OVERVIEW

Light source	LED
Watts (W)	40, 80
Lumen output (lm)	3 511 - 10 456
Efficacy (lm/W)	92 - 133
Color temperature (K)	3 000, 4 000, 5 000
CRI	>70
Weight (lbs)	12.1 - 16.7



ICES 005



IK07



## CDLA-L WITH EMERGENCY BACKUP

### HAZARDOUS LOCATION LED LINEAR LUMINAIRE

Class I, Division 1, Groups C, D

Non recessed Marine luminaires, outside type (salt water)

The CDLA-L with emergency backup Hazardous Location LED linear luminaire is designed for installations where moisture, dirt, dust, corrosion and vibration may be present.

The CDLA-L with emergency backup is also NEC/CEC certified to be used in hazardous environments where there is presence of flammable vapors or gases.

#### FEATURES AND SPECIFICATIONS

##### • Construction

###### Housing

Rugged and resilient housing made of a copper-free aluminum, corrosion resistant casting, with separated driver compartment for improved thermal management. All exposed fasteners are quality stainless steel. Available in a grey casting color and a superior electrostatic powder coating.

###### Temperature ratings

Based on the surface temperature of the fixture ;

- Class I Division 1, Group C, D is rated T6

###### Ambient operating temperature

-20° to +45° C

###### Ambient operating humidity

10% ~ 90% RH

###### Battery

- 6 W (606 to 841 lumens)
- Discharge time : 90 min
- Charge time : 24 hours
- High-Temperature, Maintenance-Free
- Nickel-Cadmium Battery,  
7 to 10 years life expectancy

###### Lens and Optics

This luminaire is outfitted of a glass lens that comes in a transparent or a diffuse finish. Beam angles options of 60° and 110° are available as well as a type II distribution pattern.

##### • Electrical

Available in S2 (80 W) configuration with a lumen per watt ratio up to 130 lm/W. Driver input voltage is 120-277 V 50/60 Hz or 347 V 50/60 Hz. Power factor >0.95. Durable high LEDs with solder-less board connections for shock and vibration resistance. The CDLA-L with emergency backup is offered in either 3 000, 4 000 and 5 000 K, with a color rendering index (CRI) >70.

##### • NEC/CEC Standards

NEC500/CEC Section 18: Existing plants

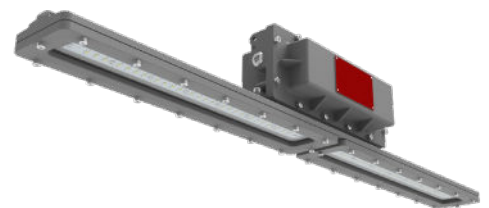
- Hazloc B :  
- Class I, Division 1, Groups C, D

NEC505/CEC Section 18 Zones: New plants

- Hazloc B  
- Class I, Zone 1, Group IIB

##### • Compliances

- Meets requirements of ICES-005 issue 4 for class A products
- 5G vibration resistant in compliance with IEC60598-1 standard, CL-4.20
- IP66
- UL924
- UL1598A
- UL1598
- UL8750



#### OVERVIEW

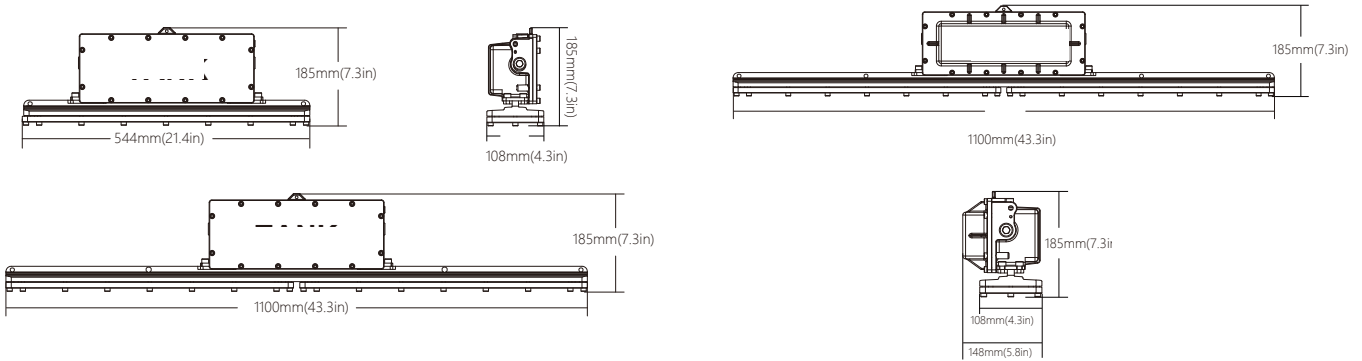
Light source	LED
Watts (W)	80
Lumen output (lm)	7 604 - 10 456
Efficacy (lm/W)	94 - 130
Color temperature (K)	3 000, 4 000, 5 000
CRI	>70
Weight (lbs)	12.1 - 16.7



**DIMENSIONS**

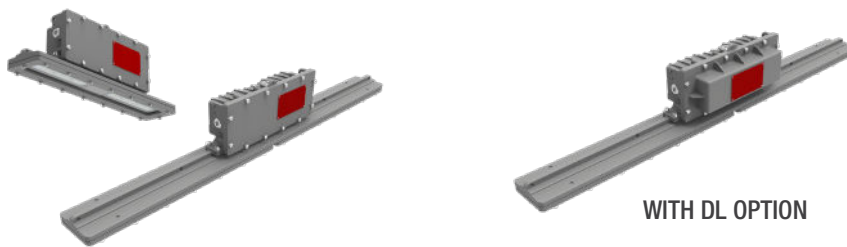
Part number	Net weight (lbs)	Dimensions (LxWxH) (in)
CDLA-LS1	16.1	21.4 x 4.3 x 7.3
CDLA-LS2	23.8	43.3 x 4.3 x 7.3

Part number	Net weight (lbs)	Dimensions (LxWxH) (in)
CDLA-LS2 (DL)	26.9	43.3 x 5.8 x 7.3



**MOUNTING**

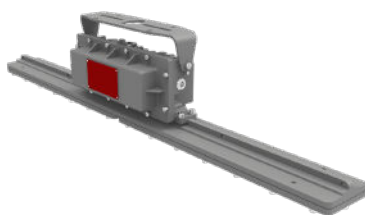
**PENDANT (STANDARD)**



**ACCESSORIES REQUIRED FOR OPTIONAL MOUNTING**

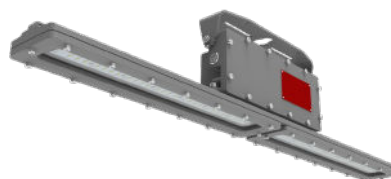
**CEILING MOUNT**

BKT761-LN



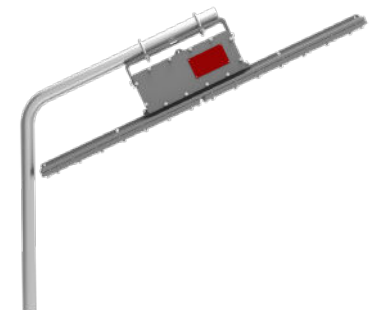
**WALL MOUNT**

BKT761-LN



**POLE MOUNT**

BKT775 + BKT761-LN



Data is based upon tests performed in a controlled environment. Actual performance can vary depending on operating conditions. All products are subject to change or may be discontinued any time without notice.

**ORDERING GUIDE**

<b>CDLA</b>	<b>L</b>			<b>B</b>	/			
Series	Lamp type	Lumen package	Volts (V)	Hazloc	Color temp. (K)	Beam angle	Lens option	
CDLA	L - LED	S1 - Refer to the S2 - technical specifications table for details	W - 120-277 H - 347	B - Class I Division 1, Class I Division 2	3K - 3 000 4K - 4 000 5K - 5 000	I - 60° J - 110° K - Type II	D - Diffuse glass <sup>1</sup> T - Transparent glass	

<sup>1</sup> Only available with the 110° optic.

**ORDERING GUIDE - WITH EMERGENCY BACKUP**

<b>CDLA</b>	<b>L</b>	<b>S2</b>	<b>W</b>	<b>B</b>	/			<b>DL</b>
Series	Lamp type	Lumen package	Volts (V)	Hazloc	Color temp. (K)	Beam angle	Lens option	Option
CDLA	L - LED	S2 - Refer to the technical specifications table for details	W - 120-277	B - Class I Division 1	3K - 3 000 4K - 4 000 5K - 5 000	I - 60° J - 110° K - Type II	D - Diffuse glass <sup>1</sup> T - Transparent glass	DL - Emergency backup <sup>2</sup>

<sup>1</sup> Only available with the 110° optic.

<sup>2</sup> External test switch supplied by others.

**ACCESSORIES (order separately)**

Part number	Type
HAR1117	Stainless steel safety kit
BKT775	Stanchion mount pipe clamp <sup>1</sup>
BKT761-LN	U-bracket

<sup>1</sup> Include 2 pipes per box.



**HAR1117**  
Stainless steel safety kit



**BKT775**  
Stanchion mount pipe clamp



**BKT761-LN**  
U-bracket

Data is based upon tests performed in a controlled environment. Actual performance can vary depending on operating conditions. All products are subject to change or may be discontinued any time without notice.

**TECHNICAL SPECIFICATION TABLE**

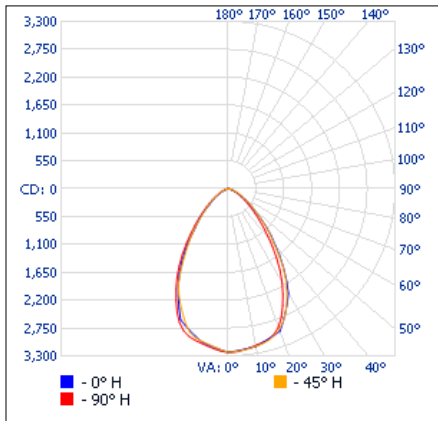
Lumen package	Optics	Lens type	Volts (VAC)	LED current (mA)	# of LEDs	Watts (W)	CRI	Lumens output (lm)	Efficacy (lm/w)	Life L70 (hrs)	Tested hours LM-80 (hrs)	Power factor	THD (%)					
<b>3 000 K</b>																		
<b>S1</b>	60°	TRANSPARENT	120-277	475	26	40	70	4 510.20	112.76	≥50000	9000	0.95	17					
			347															
			120-277															
	110°		347					4 436.25	116.35									
			120-277											4 485.21	112.13			
			347															
<b>S2</b>	60°	TRANSPARENT	120-277	500	52	80	70	9 732.99	121.66	≥50000	9000	0.95	13					
			347															
			120-277															
	110°		347					9 546.14	117.11									
			120-277											9 216.50	115.21			
			347															
<b>S1</b>	110°	DIFFUSE	120-277	475	26	40	70	3 511.23	92.38	≥50000	9000	0.95	17					
			347															
<b>S2</b>	110°		DIFFUSE	120-277	500	52		80	70				7 604.9	93.5	≥50000	9000	0.95	13
				347														
				120-277														
				347														
<b>4 000 K</b>																		
<b>S1</b>	60°	TRANSPARENT		120-277	475	26	40	70	4 614.69	115.37	≥50000	9000	0.95	17				
			347															
			120-277															
	110°		347	4 472.25					117.97									
			120-277							4 934.89					123.37			
			347															
<b>S2</b>	60°	TRANSPARENT	120-277	500	52	80	70	9 742.32	121.78	≥50000	9000	0.95	13					
			347															
			120-277															
	110°		347					9 554.71	119.27									
			120-277											9 849.62	123.12			
			347															
<b>S1</b>	110°	DIFFUSE	120-277	475	26	40	70	3 511.15	93.02	≥50000	9000	0.95	17					
			347															
<b>S2</b>	110°		DIFFUSE	120-277	500	52		80	70				7 520.41	94.17	≥50000	9000	0.95	13
				347														
				120-277														
				347														
<b>5 000 K</b>																		
<b>S1</b>	60°	TRANSPARENT		120-277	475	26	40	70	5 356.11	133.90	≥50000	9000	0.95	17				
			347															
			120-277															
	110°		347	4 800.00					120.00									
			120-277							5 118.43					123.91			
			347															
<b>S2</b>	60°	TRANSPARENT	120-277	500	52	80	70	10 456.80	130.71	≥50000	9000	0.95	13					
			347															
			120-277															
	110°		347					9 600.00	120.00									
			120-277											10 249.5	128.82			
			347															
<b>S1</b>	110°	DIFFUSE	120-277	475	26	40	70	3 897.10	97.59	≥50000	9000	0.95	17					
			347															
<b>S2</b>	110°		DIFFUSE	120-277	500	52		80	70				8 035.08	98.59	≥50000	9000	0.95	13
				347														
				120-277														
				347														

Data is based upon tests performed in a controlled environment. Actual performance can vary depending on operating conditions. All products are subject to change or may be discontinued any time without notice.

**PHOTOMETRIC DATA<sup>1</sup>**

**CDLA-LS1-W-B-4K-I-T • 4 615.7 lm**

**Polar candela distribution**



**Zonal lumen summary**

Zone	Lumens	% Fixture
0-30	2 281.5	49.4%
0-40	3 308.7	71.7%
0-60	4 365.8	94.6%
60-90	249.9	5.4%
0-90	4 615.7	100%

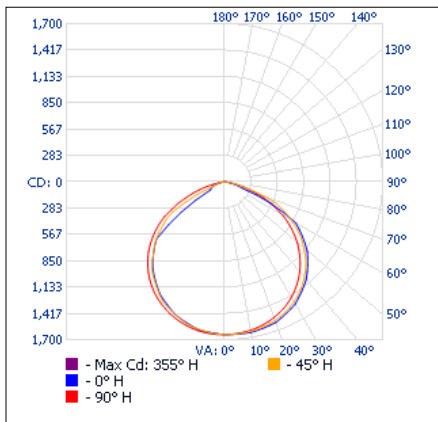
**Illuminance at a distance**

Center beam fc	Beam width	
	Vertical	Horizontal
8.3'	46.8	12.0'
16.7'	11.6	24.1'
25.0'	5.16	36.1'
33.3'	2.91	48.1'
41.7'	1.86	60.2'
50.0'	1.29	72.2'

Vert. spread: 71.6°  
Horiz. spread: 70.1°

**CDLA-LS1-W-B-4K-J-T • 4 472.8 lm**

**Polar candela distribution**



**Zonal lumen summary**

Zone	Lumens	% Fixture
0-30	1 302.5	29.1%
0-40	2 157.2	48.2%
0-60	3 827.0	85.6%
60-90	645.8	14.4%
0-90	4 472.8	100%

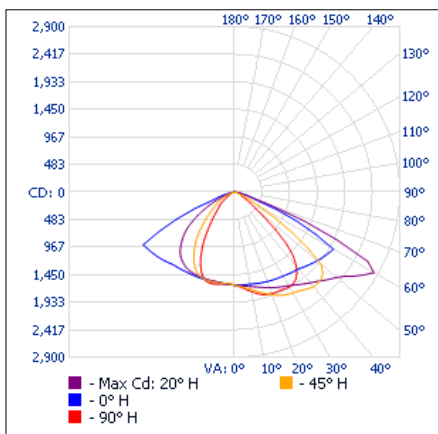
**Illuminance at a distance**

Center beam fc	Beam width	
	Vertical	Horizontal
8.3'	23.9	24.9'
16.7'	5.89	50.1'
25.0'	2.63	75.0'
33.3'	1.48	99.9'
41.7'	0.95	125.0'
50.0'	0.66	149.9'

Vert. spread: 112.6°  
Horiz. spread: 114.4°

**CDLA-LS1-W-B-4K-K-T • 4 935.5 lm**

**Polar candela distribution**



**Zonal lumen summary**

Zone	Lumens	% Fixture
0-30	1 434.4	29.1%
0-40	2 439.0	49.4%
0-60	4 365.6	88.5%
60-90	569.9	11.5%
0-90	4 935.5	100%

**Illuminance at a distance**

Center beam fc	Beam width	
	Vertical	Horizontal
8.3'	23.7	36.8'
16.7'	5.85	74.0'
25.0'	2.61	110.8'
33.3'	1.47	147.6'
41.7'	0.94	184.9'
50.0'	0.65	221.7'

Vert. spread: 131.4°  
Horiz. spread: 32.4°

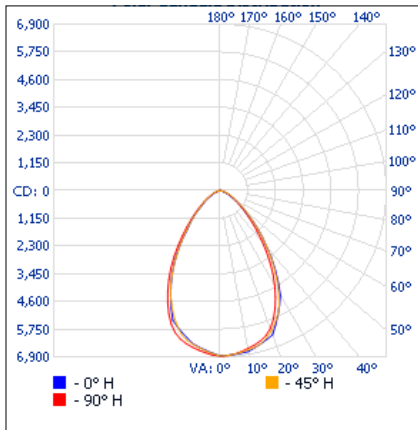
<sup>1</sup> Complete IES files available on our website.

Data is based upon tests performed in a controlled environment. Actual performance can vary depending on operating conditions. All products are subject to change or may be discontinued any time without notice.

**PHOTOMETRIC DATA<sup>1</sup> (CONTINUED)**

**CDLA-LS2-W-B-4K-I-T • 9 744.5 lm**

**Polar candela distribution**



**Zonal lumen summary**

Zone	Lumens	% Fixture
0-30	4 818.2	49.4%
0-40	6 981.6	71.7%
0-60	9 215.5	94.6%
60-90	528.9	5.4%
0-90	9 744.5	100%

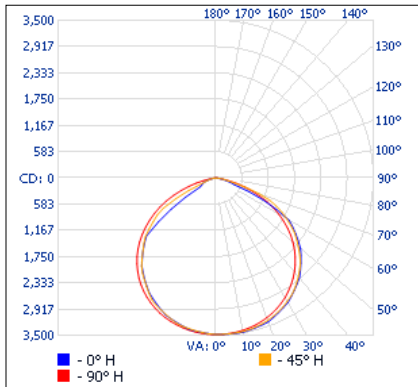
**Illuminance at a distance**

Center beam fc	Beam width	
	11.8'	11.7'
8.3'	99.5	23.7'
16.7'	24.6	23.5'
25.0'	11.0	35.5'
33.3'	6.18	47.3'
41.7'	3.94	59.3'
50.0'	2.74	71.0'

Vert. spread: 70.8°  
Horiz. spread: 70.3°

**CDLA-LS2-W-B-4K-J-T • 9 555.8 lm**

**Polar candela distribution**



**Zonal lumen summary**

Zone	Lumens	% Fixture
0-30	2 761.3	28.9%
0-40	4 577.4	47.9%
0-60	8 143.7	85.2%
60-90	1 412.2	14.8%
0-90	9 555.8	100%

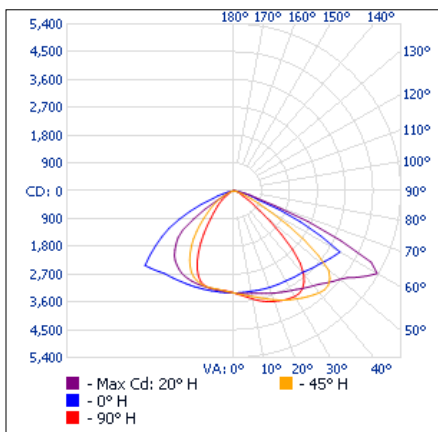
**Illuminance at a distance**

Center beam fc	Beam width	
	24.9'	25.7'
8.3'	23.9	50.1'
16.7'	5.89	51.8'
25.0'	2.63	75.0'
33.3'	1.48	99.9'
41.7'	0.95	125.0'
50.0'	0.66	149.9'

Vert. spread: 112.6°  
Horiz. spread: 114.4°

**CDLA-LS2-W-B-4K-K-T • 9 850.4 lm**

**Polar candela distribution**



**Zonal lumen summary**

Zone	Lumens	% Fixture
0-30	2 868.0	29.1%
0-40	4 900.3	49.7%
0-60	8 774.9	89.1%
60-90	1 075.5	10.9%
0-90	9 850.4	100%

**Illuminance at a distance**

Center beam fc	Beam width	
	34.4'	5.5'
8.3'	48.0	69.1'
16.7'	11.9	11.0'
25.0'	5.29	103.5'
33.3'	2.98	137.8'
41.7'	1.90	172.6'
50.0'	1.32	207.0'

Vert. spread: 128.4°  
Horiz. spread: 36.4°

<sup>1</sup> Complete IES files available on our website.

Data is based upon tests performed in a controlled environment. Actual performance can vary depending on operating conditions. All products are subject to change or may be discontinued any time without notice.