

Project: \_\_\_\_\_ Type: \_\_\_\_\_

Drawn by: \_\_\_\_\_ Catalogue #: \_\_\_\_\_ Date: \_\_\_\_\_

## Series spec sheet

# S

## COMPACT REMOTE

### FEATURES AND SPECIFICATIONS

#### • Mechanical

- Die cast, solid metal housing with die cast, twist lock lamp collar
- Complete adjustability - both tilt and swivel
- 5" diameter canopy standard
- Two canopy mounting holes designed to match standard electrical junction boxes
- White paint finish is standard, black color is optional
- MR16 lamp designed with low glare reflector and available in 6 VDC, 12 VDC or 24 VDC

#### • Compliances

- CSA Certified to C22.2 #141.15
- Meets requirements of ICES-005



### OVERVIEW

Light source	LED, Incandescent
Input Voltage (VDC)	6, 12, 24

For complete warranty details, please see our terms and conditions on our website.



quick  
ship



ICES  
005



## TYPICAL SPECIFICATION



### TYPICAL SPECIFICATION

The all Die Cast remote heads shall be, solid metal housing with, twist lock lamp collar, fully adjustable for maximum spacing and designed to accept Stanpro's factory installed high performance MR16 LED lamps ( ) V, ( ) W, ( ) lumens. The LED's, lens and circuit boards shall be designed for the intent of Emergency Lighting to ensure extended life and maximum performance. Remote fixture shall be supplied with a canopy for installation on any four-inch octagon box. The remote fixtures shall be certified to CSA 22.2 No.141-15 and be ICES005 compliant. The remote unit shall be Stanpro model: S \_\_\_\_\_

Data is based upon tests performed in a controlled environment. Actual performance can vary depending on operating conditions. All products are subject to change or may be discontinued any time without notice.

**QUICK SHIP AND TECHNICAL SPECIFICATION TABLE** 🕒<sup>1</sup>

Part number	DC Volts (VDC)	Nbr of heads	Head	Lamp (W)	Light source	Color
S1-06-24V4WLR/WH	6-24	1	S	4	LED	White
S2-06-24V4WLR/WH	6-24	2	S	4	LED	White

<sup>1</sup> **QUICK SHIP:** Product availability is subject to change without notice. Please contact your Stanpro customer service representative to confirm inventory levels at time of order.

**ORDERING GUIDE - LED**

Series	Nbr of heads	Volts (VDC operational)	Watts (W)	Lamp type	Color	Options
S	1 - Single head	06-24V - 6 to 24	4W - 4	LR - LED	WH - White (standard) BK - Black	LCP - Less Canopy <sup>1</sup> TP - Tamper Proof Screws WGD - Wireguard (order separately) PGD - Polycarb Guard
	2 - Double head		5W - 5	LA - LED		
	3 - Triple head	12-24V - 12 to 24	6W - 6	LA - LED		
	4 - Quad head (require 12" dia. canopy)		7W - 7			

<sup>1</sup> LCP option only available with Single head

**ORDERING GUIDE - INCANDESCENT**

Series	Nbr of heads	Volts (VDC)	Lamp type	Color	Options
S	1 - Single head	06V - 6	See lamp selection chart below	WH - White (standard) BK - Black	LCP - Less Canopy <sup>1</sup> TP - Tamper Proof Screws WGD - Wireguard (order separately) PGD - Polycarb Guard
	2 - Double head	12V - 12			
	3 - Triple head	24V - 24			
	4 - Quad head (require 12" dia. canopy)				

<sup>1</sup> LCP option only available with Single head

**LAMP SELECTION - INCANDESCENT**

MR16 • Small head	6 V	12 V	24 V
Quartz halogen	10WQ	20WQ, 35WQ	20WQ, 50WQ

**WIREGUARD <sup>1</sup>**

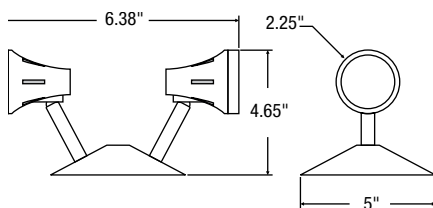
	Part number	Dimension (in)
1 head	WGD550	8.5x6x7
2 heads		

<sup>1</sup> Please contact your customer service representative for more information.

**LEXAN GUARD <sup>1</sup>**

	Part number	Dimension (in)
1 head	PGD103	7 x 7.25 x 8.5
2 heads	PGD104	14 x 7.25 x 7.5

**DIMENSIONS**



**SPACING GUIDE**

Mounting height	Spacing center to center (ft)			
	4WLR	5WLA	6WLA	7WLA
8 ft	76	81	94	108
10 ft	79	79	93	106
15 ft	66	62	82	96
20 ft	53	49	73	87

**LUMEN TABLE**

Watts	Lumens
4W LR	388
5W LA	435
6W LA	507
7W LA	652

Data is based upon tests performed in a controlled environment. Actual performance can vary depending on operating conditions. All products are subject to change or may be discontinued any time without notice.