



TL96

LED TRACK HEAD

Clean lines and aesthetic design fit easily into all applications and become part of the design concept. TL96 series offers excellent beam control while providing high performance accent lighting for retail and commercial applications.

FEATURES AND SPECIFICATIONS

• Construction

Housing

Heavy duty die cast aluminum housing and integrated heat sink.

Finishes

Heavy duty scratch resistant powder coated. Available in textured white and black (silver upon request).

Optics/ Reflectors

Reflector made of plastic material.

Beams

Narrow Flood 22°, Flood 44°, Wide Flood 58°

Aiming

- 360° horizontal coverage
- Greater than 90° vertical aiming capability

• Electrical

THD < 20%, PF > 0.9

LED

Long life LED that provide 80+ or 90+ CRI, with a choice of 3 000 K, 3 500 K and 4 000 K colour temperatures.

Lumens

3 800 lm - 4 042 lm

Lumen maintenance

Over 95% lumen maintenance expected at 33 000 hours at 30 K colour temperature.

Efficacy

41 W: 3 000 K, 92.3 lm/W

Driver

41 W, 120 V Line voltage LE + TE Dimmable.

Adapter

Track heads with "J" adapter are classified to be used with Stanpro STJ track series, Juno T or TU track series and Prescolite TS or TT track series. On/ off switch standard. Spring-loaded latch with polarity arrow properly secures track head to the track. Easily switch the track head to two-circuit by pulling up contact. See instruction sheet for details. Track heads with "H" adapter are classified to be used with Cooper Lighting L641/2/3 track series.

• Accessories

Feeds, connectors and line voltage extensions (12", 18", 24", 36") are available. Please refer to the "tracks and accessories" pages for ordering guide.

• Compliances

- Photometric testing in compliance with IES LM 79-80
- ICES 005
- ETL listed

5^{yrs}
warranty



LED
fixture



ICES
005



OVERVIEW

Light source	LED
Watts (W)	41
Lumen output (lm)	3 800 - 4 042
Efficiency (lm/W)	93 - 99
Color temperature (K)	3 000 K, 3 500 K, 4 000 K
CRI	80+ and 90+
Weight (lbs)	3.65

ORDERING GUIDE

TL96	40				A			
Series	Lumen package (lm)	Color temp. (K)	CRI	Beam distribution	∧	Voltage	Adaptor	Finish ²
TL96	40 - 3 800 - 4 042	30 - 3 000 35 - 3 500 40 - 4 000	80 - 80+ 90 - 90+	N - Narrow flood F - Flood W - Wide flood		A - 120V	J - J & J2 track (standard) H - H & H2 Track ¹	BK - Black WH - White

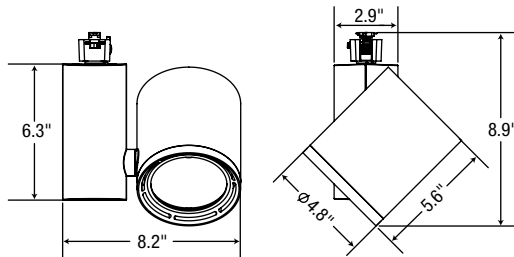
¹Please contact factory for availability.

² For other options and availabilities please contact factory.

TECHNICAL SPECIFICATION TABLE

Lumen package	Watts (W)	Volts (V)	3 000 K		3 500 K		4 000 K		CRI	Life L70 (h)	Type of distrib.	Power factor	THD (%)
			Lumen (lm)	Efficiency (lm/W)	Lumen (lm)	Efficiency (lm/W)	Lumen (lm)	Efficiency (lm/W)					
40	41	120	3 756	92	3 808	94	3 872	95	80	50 000	Narrow Flood	>0.9	<20

DIMENSIONS



LIST OF COMPATIBLE DIMMERS

Lutron	S-603PG	S-600P
	DVELV-303P	SELV-300P
Leviton	CT-130P	TG-600P
	DVCL-153P	LG-600P
	DV-600P	MAELV-600
	TGCL-153P	FAELV-500
	IPI06-1LZ	6161
Lightolier	ZP260QEW	
		6633-P
		IPE04
Cooper	DAL06P	
	DLC03P	
	SLC03P	

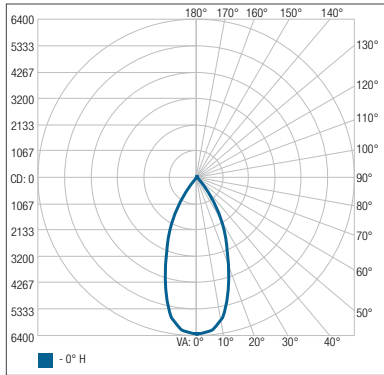
The fixture dimmer compatibility table shown beside is for dimming functionality only. The dimmers listed in this chart may not comply to ICES 005 class A or B standards. To confirm ICES 005 compliance please contact the dimmer manufacturer.

Data is based upon tests performed in a controlled environment. Actual performance can vary depending on operating conditions. All products are subject to change or may be discontinued any time without notice.

PHOTOMETRIC DATA¹

TL96-40-3080F-AJ • 3905.3lm / 41W

Polar candela distribution



Input wattage	40.92
Total luminaire lumens	3905.3
Lumens per watt	95
Beam angle	Flood 44°

Zonal lumen summary

Zone	Lumens	% Fixture
0-30	3150.8	80.7%
0-40	3763.7	96.4%
0-60	3866.6	99%
60-90	38.6	1%
70-100	17.2	0.4%
90-120	0	0%
0-90	3905.3	100%
90-180	0	0%
0-180	3905.3	100%

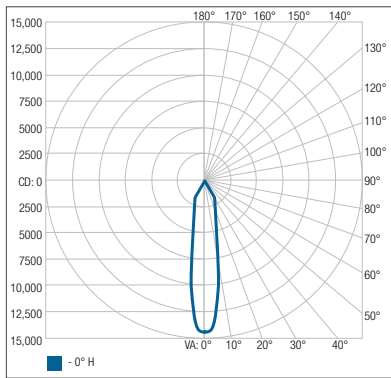
Illuminance at a distance

Center beam fc	Beam width	
1.7'	2197 fc	1.4'
3.3'	583 fc	2.7'
5.0'	254 fc	4.1'
6.7'	141 fc	5.5'
8.3'	92.1 fc	6.8'
10.0'	63.5 fc	8.2'

■ Beam spread: 44.8°

TL96-40-3080N-AJ • 3755.8lm / 41W

Polar candela distribution



Input wattage	40.92
Total luminaire lumens	3755.8
Lumens per watt	92
Beam angle	Narrow Flood 22°

Zonal lumen summary

Zone	Lumens	% Fixture
0-30	3147.2	83.8%
0-40	3649.2	97.2%
0-60	3716.0	98.9%
60-90	39.9	1.1%
70-100	15.7	0.4%
90-120	0	0%
0-90	3755.8	100%
90-180	0	0%
0-180	3755.8	100%

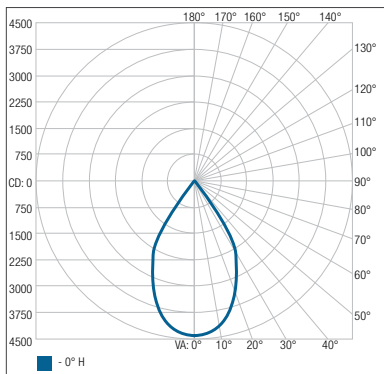
Illuminance at a distance

Center beam fc	Beam width	
1.7'	4987 fc	0.6'
3.3'	1324 fc	1.2'
5.0'	577 fc	1.8'
6.7'	321 fc	2.4'
8.3'	209 fc	3.0'
10.0'	144 fc	3.6'

■ Beam spread: 20.2°

TL96-40-3080W-AJ • 3800.4lm / 41W

Polar candela distribution



Input wattage	40.94
Total luminaire lumens	3800.4
Lumens per watt	92.8
Beam angle	Wide Flood 58°

Zonal lumen summary

Zone	Lumens	% Fixture
0-30	2782.0	73.2%
0-40	3577.0	94.1%
0-60	3759.9	98.9%
60-90	40.5	1.1%
70-100	17	0.4%
90-120	0	0%
0-90	3800.4	100%
90-180	0	0%
0-180	3800.4	100%

Illuminance at a distance

Center beam fc	Beam width	
1.7'	1525 fc	2.0'
3.3'	405 fc	3.9'
5.0'	176 fc	5.9'
6.7'	98.2 fc	7.9'
8.3'	64.0 fc	9.8'
10.0'	44.1 fc	11.8'

■ Beam spread: 61.3°

¹ Complete IES files available on our website.

Data is based upon tests performed in a controlled environment. Actual performance can vary depending on operating conditions. All products are subject to change or may be discontinued any time without notice.