

3 1/2" Outdoor Soffits

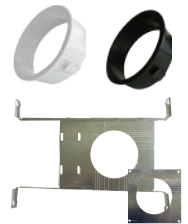
Compatible Lamps (PAR20¹, R20¹)



| Order code | Model number | Finish | Opening diameter (in.) | Volts (VAC) | Socket | Case qty (master) |
|-----------------|------------------------------|--------|------------------------|-------------|--------|-------------------|
| Housings | | | | | | |
| 62691 | RF3.5in/OUT.SOF/BLK/E26/STD | Black | 3 1/2 | 120 | E26 | 12 |
| 62692 | RF3.5in/OUT.SOF/BRN/E26/STD | Brown | 3 1/2 | 120 | E26 | 12 |
| 62693 | RF3.5in/OUT.SOF/CLAY/E26/STD | Clay | 3 1/2 | 120 | E26 | 12 |
| 62694 | RF3.5in/OUT.SOF/WH/E26/STD | White | 3 1/2 | 120 | E26 | 12 |

Accessories

| Order code | Model number | Type | Finish | Opening diameter (in.) | Case qty (master) |
|------------|---------------------------------|---------------------------------|--------|------------------------|-------------------|
| 62668 | RF/ACC/BAF/3.5/BLK/OUT.SOF/STD | Baffle | Black | 3 1/2 | 50 |
| 62669 | RF/ACC/BAF/3.5/WH/OUT.SOF/STD | Baffle | White | 3 1/2 | 50 |
| 62771 | ACC/MPLATE/3.75IN/HANG.BARS/STD | Mounting plate with hanger bars | - | 3 3/4 | 25 |
| 66050 | ACC/MPLATE/3.75IN/SQR/STD | Square mounting plate | - | 3 3/4 | 96 |



4 1/2" Outdoor Soffits

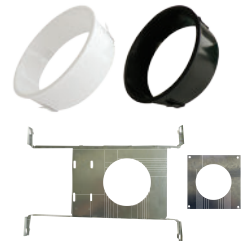
Compatible Lamps (BR30², PAR30³)



| Order code | Model number | Finish | Opening diameter (in.) | Volts (VAC) | Socket | Case qty (master) |
|-----------------|------------------------------|--------|------------------------|-------------|--------|-------------------|
| Housings | | | | | | |
| 62695 | RF4.5in/OUT.SOF/BLK/E26/STD | Black | 4 1/2 | 120 | E26 | 12 |
| 62696 | RF4.5in/OUT.SOF/BRN/E26/STD | Brown | 4 1/2 | 120 | E26 | 12 |
| 62697 | RF4.5in/OUT.SOF/CLAY/E26/STD | Clay | 4 1/2 | 120 | E26 | 12 |
| 62698 | RF4.5in/OUT.SOF/WH/E26/STD | White | 4 1/2 | 120 | E26 | 12 |

Accessories

| Order code | Model number | Type | Finish | Opening diameter (in.) | Case qty (master) |
|------------|----------------------------------|---------------------------------|--------|------------------------|-------------------|
| 62670 | RF/ACC/BAF/4.5/BLK/OUT.SOF/STD | Baffle | Black | 4 1/2 | 50 |
| 62671 | RF/ACC/BAF/4.5/WH/OUT.SOF/STD | Baffle | White | 4 1/2 | 50 |
| 62772 | ACC/MPLATE/4.625IN/HANG.BARS/STD | Mounting plate with hanger bars | - | 4 5/8 | 25 |
| 66052 | ACC/MPLATE/4.75IN/SQR/STD | Square mounting plate | - | 4 3/4 | 96 |



For complete warranty information, please visit www.standardpro.com

6 damp location
1 50w maximum per lamp
2 65w maximum per lamp
3 75w maximum per lamp
outdoor
1 yr warranty
US