



## TWL02S/TWL02D

### LED WALL WASHER

The Stanpro single or double LED wall washer is made of an extruded aluminum housing which provides durability, clean lines and optimal thermal dissipation. The TWL02S and TWL02D come complete with J & J2 style track adapter. H & H2 style adapter available upon request.

#### FEATURES AND SPECIFICATIONS

##### • Construction

**Housing**  
Heavy duty die cast aluminum housing and integrated heat sink.

**Finishes**  
Heavy duty scratch resistant powder coated.  
Available in textured white and black

##### • Electrical

THD < 20%, PF > 0.9.

##### Driver

120 V Line Voltage, LE + TE Dimmable

##### Aiming

Precision aiming adjustment with a pivot that allows for rotations up to 350° vertically in both directions. Each side of the double fixture can be independently adjusted for more flexibility.

##### Lumens

Single  
30 W LED: 3 000 K (2 580 lm)  
(4 000 K upon request)  
Double  
50 W LED : 3 000 K (4 737 lm)  
(4 000 K upon request)

##### • Installation

**Adapter**  
Track heads with "J" adapter are classified to be used with Stanpro STJ track series, Juno T or TU track series and Prescolite TS or TT track series. On/off switch standard. Spring-loaded latch with polarity arrow properly secures track head to the track. Easily switch the track head to two-circuit by pulling up contact. See instruction sheet for details. Track heads with "H" adapter are classified to be used with Cooper Lighting L641/2/3 track series.

##### Lens and Louvers

The fixture comes with frosted lens in polycarbonate. Optional louvers available as accessories.

##### • Compliances

- ICES 005
- ETL listed



#### OVERVIEW

Light source	LED
Watts (W)	30 - 50
Lumen output (lm)	2 580 to 4 860
Efficiency (lm/W)	86 - 95
Color temperature (K)	3 000 and 4 000
CRI	80+
Weight (lbs)	2.5 - 5

**ORDERING GUIDE**

Series	Watts (W)	Color temp. (K)	Volts (V)	Adapter	Finish <sup>2</sup>
TWL02S	30 - 30	30K - 3 000 40K - 4 000 <sup>1</sup>	A 120	J - J & J2 Track H - H & H2 track <sup>1</sup>	BK - Black WH - White
TWL02D	50 - 50				

<sup>1</sup> Please contact factory for availability.

<sup>2</sup> For other options and availabilities please contact factory.

**TECHNICAL SPECIFICATION TABLE**

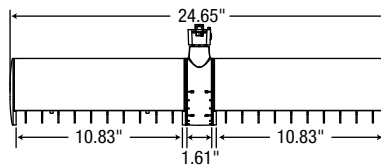
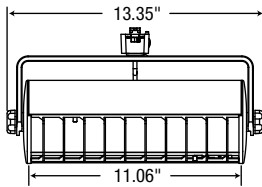
Lumen package	Watts (W)	Volts (V)	3 000 K		4 000 K		CRI	Life L70 (hrs)	Power factor	THD (%)
			Lumen (lm)	Efficiency (lm/W)	Lumen (lm)	Efficiency (lm/W)				
30	30	120	2 579	86	2 790	93	80	50 000	>0.9	<20
50	50	120	4 736	94	4 862	97	80	50 000	>0.9	<20

**ACCESSORIES (sold seperately)**

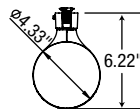
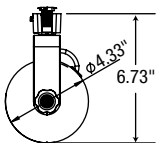
Louver
<b>LEN325-WH</b>
<b>LEN325-BK</b>

**DIMENSIONS**

**FRONT VIEW**



**SIDE VIEW**



Data is based upon tests performed in a controlled environment. Actual performance can vary depending on operating conditions. All products are subject to change or may be discontinued any time without notice.