

## Series spec sheet

# VC

## HAZARDOUS LOCATION REMOTE FIXTURE

Class I, Division 2, Groups A, B, C, D

Class II, Division 1 and 2, Groups E, F, G

Class III

6, 12 or 24 V DC models

Wall, ceiling or pendant mount

Designed to meet the strictest Codes, the VC series of hazardous location remote fixtures provides safe and dependable operation. The VC series housings are built with die cast, copper free aluminum, in a variety of Class and Division rated models. Available as 6 V, 12 V or 24 V models with wall, ceiling or pendant mounted configuration.

### FEATURES AND SPECIFICATIONS

#### • Circuitry

- Single or double internal MR16 lamp assemblies
- Quartz-halogen bi-pin or LED lamps

#### • Mechanical

- Die cast, copper free aluminum, grey finish
- Heavy-duty Pyrex glass lens
- Internal MR16 lamp assembly is fully adjustable
- Wall, ceiling or pendant mounting (as specified)
- Wiring pre-pulled through fixture
- Wall and ceiling models c/w integrated die cast junction box
- Junction box c/w oversized integral mounting holes and tapped and plugged rigid holes

#### • Approvals

- CSA Certified to C22.2 #137
- CSA Certified to C22.2 #141-15
- Class I, Division 2, Groups A, B, C, D
- Class II, Division 1 and 2, Groups E, F, G
- Class III

#### • Compliance

- Meets requirements of ICES-005

### OVERVIEW

Light source	LED
Input Voltage (V DC)	6, 12, 24

For complete warranty details, please see our terms and conditions on our website.



**ORDERING GUIDE - LED**

Series	Head	Nbr of lamps	DC Volts (V DC operational)	Watts (W)	Lamp type	Mounting	Options
VC	1 - Single 2 - Double (with J-Box)	1 - Single lamp per head 2 - Double lamp per head	06-24V - 6 to 24	4W - 4	LR - LED	CM - Ceiling mount PM - Pendant mount WM - Wall mount	LGD - Die cast lens guard
			12-24V - 12 to 24	5W - 5	LA - LED		
				6W - 6	LA - LED		
				7W - 7			

**TEMPERATURE CODE**

Head/Lamp	Temperature code (25°C)	Temperature code (40°C)	Simultaneous Class I, II and III
4WLR	T3C	T3A	T2D
5WLA	T3A	T3	T2D
6WLA	T3A	T3	T2D
7WLA	T3A	T3A	T2D

**SPACING GUIDE**

Mounting height	Spacing center to center (ft)			
	4WLR	5WLA	6WLA	7WLA
8 ft	76	81	94	108
10 ft	79	79	93	106
15 ft	66	62	82	96
20 ft	53	49	73	87

**LUMEN TABLE**

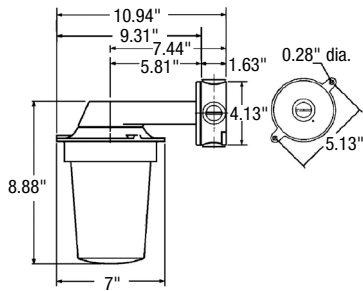
Watts	Lumens
4W LR	388
5W LA	435
6W LA	507
7W LA	652

Data is based upon tests performed in a controlled environment. Actual performance can vary depending on operating conditions. All products are subject to change or may be discontinued any time without notice.

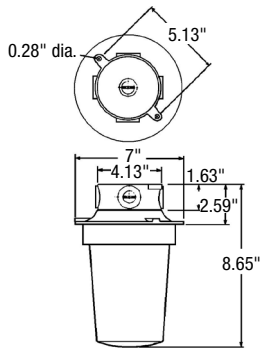
**DIMENSIONS**

**SINGLE HEAD**

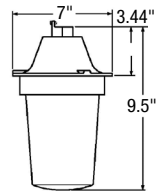
**WALL MOUNT**



**CEILING MOUNT**

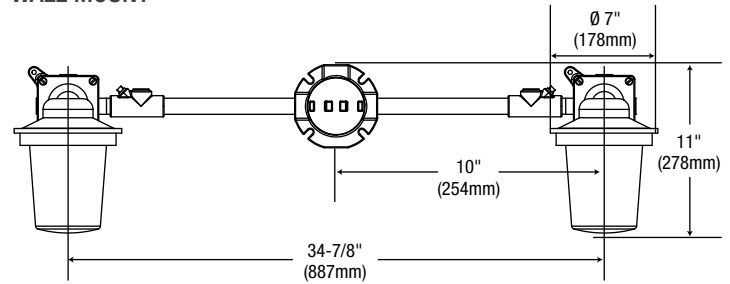


**PENDANT MOUNT**

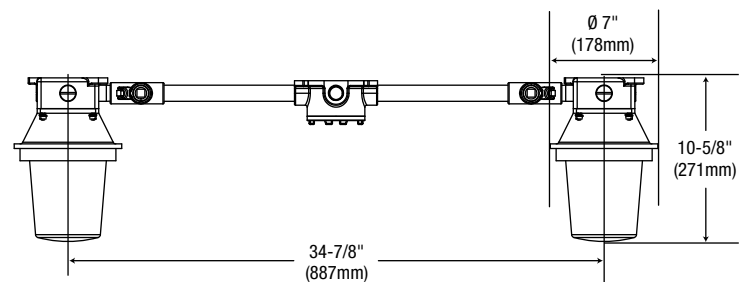
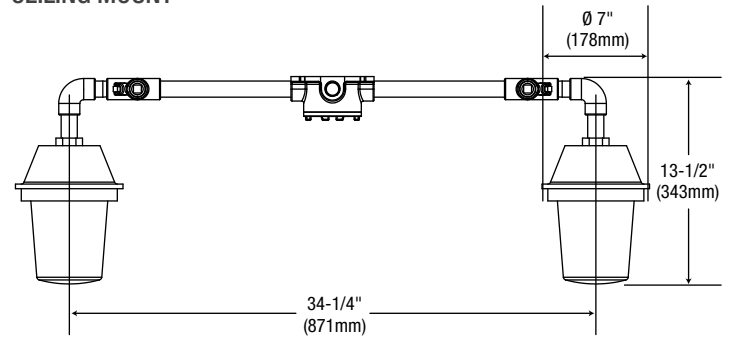


**DOUBLE HEAD**

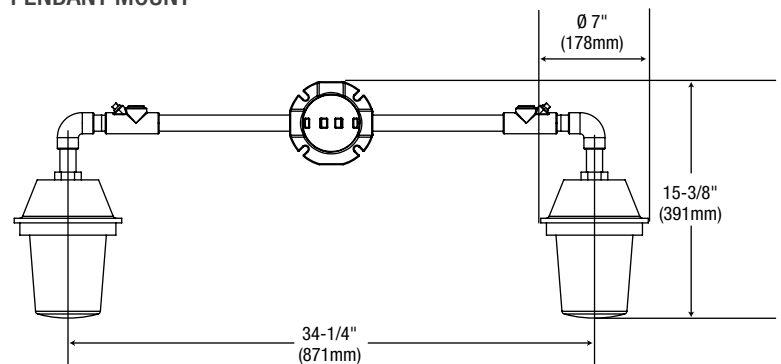
**WALL MOUNT**



**CEILING MOUNT**



**PENDANT MOUNT**



Data is based upon tests performed in a controlled environment. Actual performance can vary depending on operating conditions. All products are subject to change or may be discontinued any time without notice.