

L2TRV Tri-Level Motion Sensor LED Strip

The L2TRV series of LED strips feature an integrated tri-level microwave motion sensor, preventing energy loss and increasing energy savings. These luminaires feature a rounded lens that evenly diffuses the light and an innovative housing designed for quick and easy installation. The L2TRV series is the perfect choice for applications requiring continuous lighting, such as hallways, common areas, parkades and stairwells.



■ Integrated Motion Sensor

A microwave motion sensor with tri-level, bi-level, On/Off and daylight harvesting capabilities. Sensor settings are field adjustable to meet the specific lighting needs of all spaces. The sensor is mounted behind the lens, avoiding bulky and intrusive externally mounted sensors.

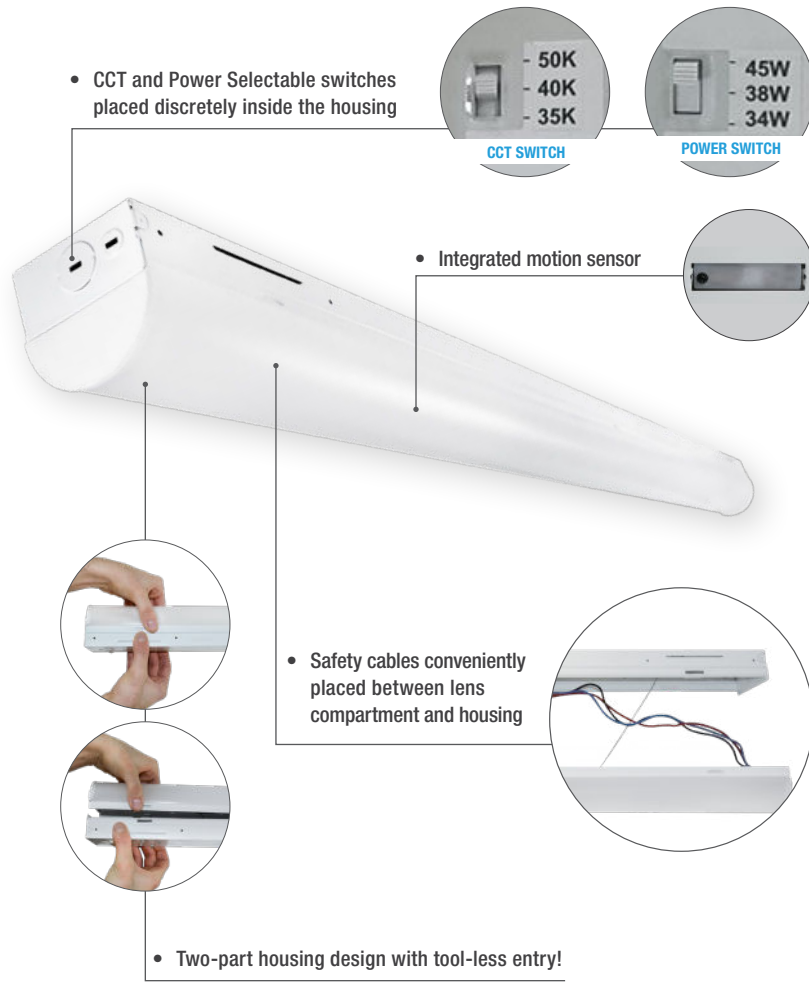
■ Colour and Power Selectable

Versatile LED strip luminaires with the ability to adapt to the colour temperature (3 500/4 000/ 5 000 K) and lumen output requirements for a variety of projects and applications. A single SKU can now replace up to 18 individual luminaires - a distributor's best friend!

■ 120-347 V

Say goodbye to stocking both 120-227 V and 347 V configurations and never worry about sending the wrong voltage to a job site - our drivers function automatically between 120 V and 347 V.

L2TRV - At a Glance



Transparent End Caps (Sold Separately)

Our transparent end caps accessory is the perfect option for creating a seamless and consistent run of light when the L2TRV LED strips are installed in continuous row mounting luminaires together. This accessory can also be used for regular installations (non-row mounted) to create a unique and pleasant 360° illumination!



Transparent End Caps



Standard End Caps

Included with Every Luminaire!



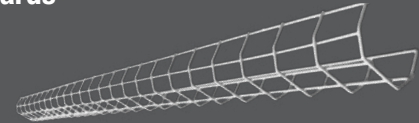
Junction Box
Cover Plate



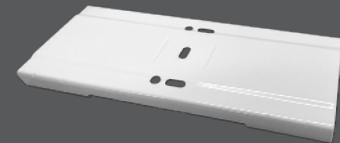
V-Hooks

Accessories (Sold Separately)

Wire Guards



Continuous Row Mounting Connector



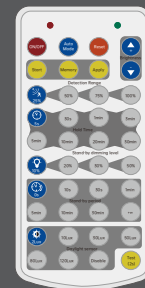
Transparent End Caps



Suspension Chain Kit



Remote Control for Motion Sensor



Looking for Regular LED Strips?

Check out the L2STR Series!

