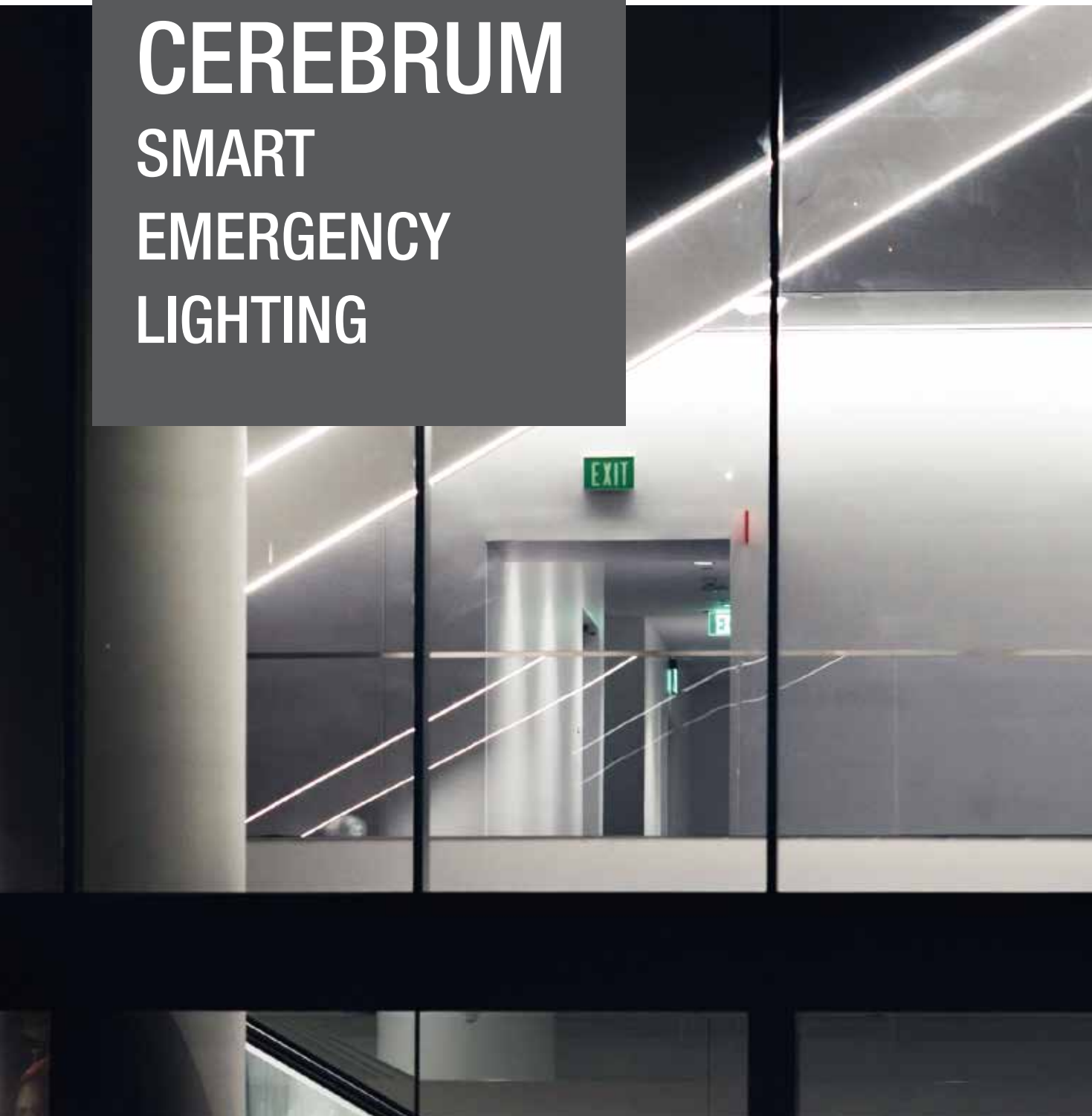


CEREBRUM

SMART
EMERGENCY
LIGHTING



MODERN SETUP, SMARTER SOLUTION

Reliability is the most important feature of any emergency power source. Without it, all other features and benefits are meaningless. Fortunately, there is now an innovative and reliable solution that greatly simplifies the installation process and considerably reduces the cost of material, labor, monitoring and maintenance: the Cerebrum system. In fact, normally on signs and normally off remotes must operate independently on the building's power in the event of a power failure. It thus requires two different cables just to connect the emergency fixtures. A third wire is even needed if we want to allow communication

between the units. It therefore generates important material and labor cost, especially for large and vast building where running thousands of feet of wire is needed. The Cerebrum system is hence the perfect solution to encounter those important costs, because it only needs a single cable instead of 3. It is actually the Cerebrum drivers within the units that will allow determining what will normally be off or normally on in the circuit, as well as permitting the communication between the units and the Cerebrum Software.

CEREBRUM LAYOUT

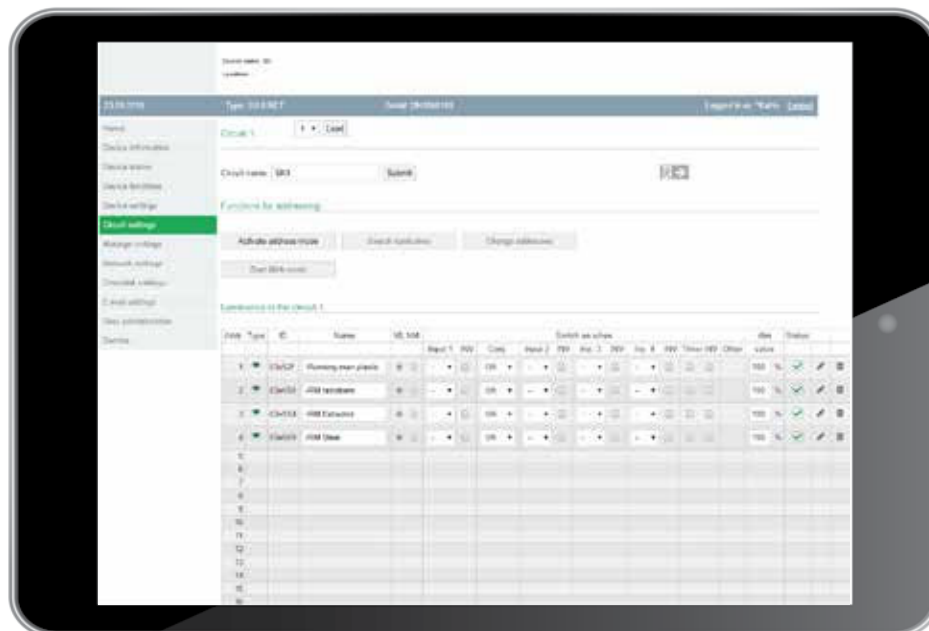
Cerebrum system is a compact centralized battery that has 144 W of capacity for 1 hour.

An extra battery pack can be added to increase duration, if needed. It can be split across 6 channels and be related to a maximum of 120 devices. There are 8 compatible products with Cerebrum system: 7 signs and 1 remote.

Since it's a centralized battery, only one point of maintenance and service is required, being again a cost effective solution.

CUSTOMIZATION

The Cerebrum system is equipped with an automatic search and light coding function. It means the main user can identify every single unit present in a building with a unique name or code. It's therefore easier for maintenance afterwards and avoids laborious coding errors.



KEY FEATURES

- All-in-one solution handling Normally On, Normally Off and communication with the same pair of wires
- Monitors the emergency lighting system by automatically performing the tests required by the National Fire Code of Canada
- Cerebrum connects to internet via Ethernet cable and can be controlled through the app or web from anywhere in the world
- All Cerebrum systems installed in multiple buildings can be controlled, operated and monitored remotely in the same group using the Cerebrum Web platform
- Maintenance report is created and available on the app or web platform
- Error notification and important information are sent to the predefined user
- Cerebrum is a centralized battery meaning only one point of service is needed



MONITORING & MAINTENANCE

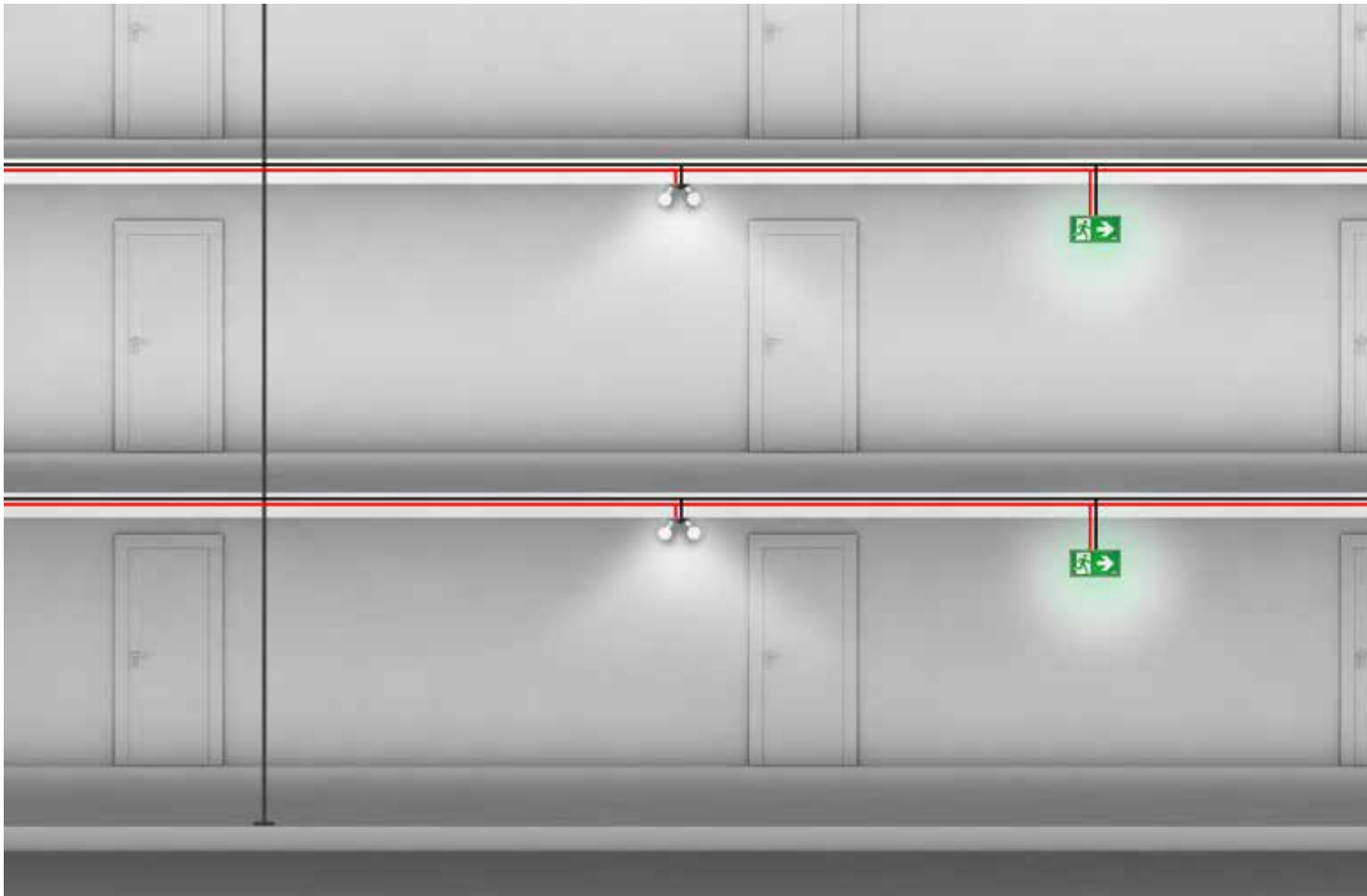
The autotest feature allows testing of your emergency system to the Firecode of Canada's requirements. All tests and changes to the system are logged. Reports are automatically sent via email for effective maintenance. If a lamp is no longer turning on, receive a fast update by email.

For example, if there is a load variation in the system, the Cerebrum software will create a report accessible in the web platform and will send an error message by email to the main user. Since it is possible to identify the units by a unique name the main user will easily know where the defective fixture is located in the building so it can be replaced.

NETWORKING

Due to the Cerebrum functionality, all systems in its group can be centrally controlled, operated and serviced. Ultimately, the full potential of the Cerebrum system unfolds with its visualization software. Cerebrum connects to internet via Ethernet cable and can be controlled through the app or web from anywhere in the world.

All the emergency lighting systems of multiple building can thus be visualized in the same network, by a single person and from any location with an internet connection. Information about the status of the systems will be sent by e-mail to the main user.

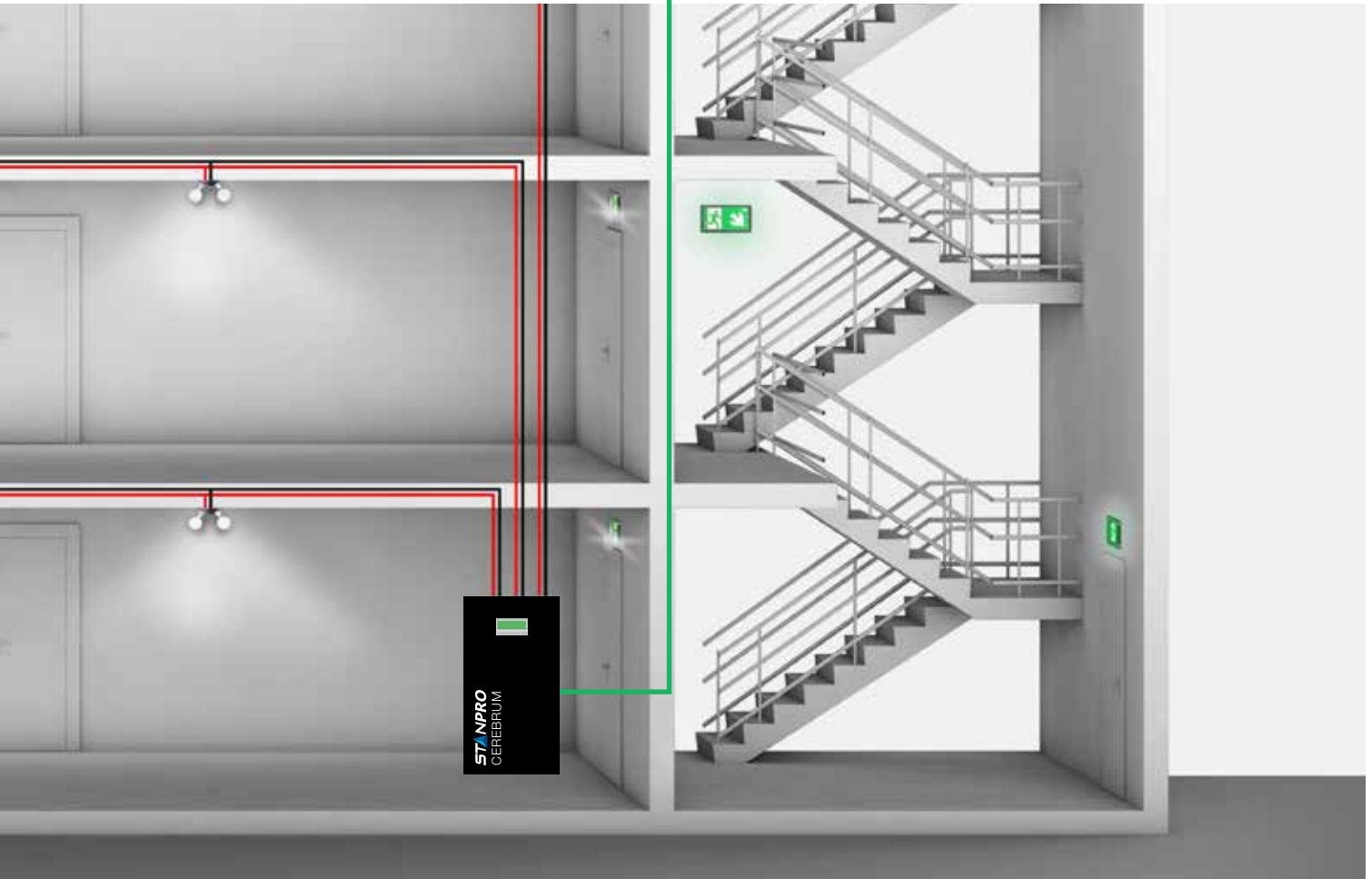




Same pair of wires for
Normally ON signs,
Normally OFF remotes
and communication



Control the Cerebrum Web
platform through the app or web
from anywhere in the world



CEREBRUM

SMART EMERGENCY LIGHTING

The CEREBRUM system is an innovative solution to emergency lighting with its advanced features in a simple layout and cost-effective installation. This is an all-in-one solution that handles Normally ON, Normally OFF, and communication with the same pair of wires. CEREBRUM is connected to the internet via an Ethernet cable and can be controlled through the app or web from anywhere in the world. It is thus possible to control more than one unit within a single building, as well as manage multiple buildings remotely from a single access point. Furthermore, only one point of maintenance is needed since it is now possible to daisy-chain your Running Man signs and remote lights back to your centralized CEREBRUM battery unit. The auto-test feature allows testing of your emergency system to the fire code of Canada's requirements. All tests and changes to the system are logged. Reports are automatically sent via email for effective maintenance.

FEATURES AND SPECIFICATIONS

- **Circuitry**
 - 120/277/347 VAC input, field selectable
 - 24 VDC output
 - 144 W maximum evenly split across 6 inputs (channels) not exceeding 54 W per input (channel)
 - 2 DC terminal blocks per input (channel)
 - Wattage capacity of 144 W maximum for 30 and 60 min emergency power duration standard
 - Extra battery pack can be added for more duration
 - Fully automatic, current limited charger
 - High performance battery
 - Programmable auto-test
 - Ethernet port
 - TFT display
 - 4 operations buttons
- **Mechanical**
 - Steel construction
 - Black powder coat finish comes standard
 - 3 keyholes for wall mount
 - 19 knockouts of 20mm for easy wiring
 - Conduit entry knockouts
- **Compatible devices**
 - Signs: RMS, RMXL, RMQ, RMV, RMPS, RMEA, RMR
 - Remote: N head, single or double
- **Approvals**
 - Certified CSA to C22.2 #141-15

OVERVIEW

Light source	LED
Input voltage (VAC)	120, 277, 347
Wattage capacity (W)	144
Max. channels	6
Max. connected devices	120

For complete warranty details, please see our terms and conditions on our website.



ICES
005



ORDERING GUIDE

Part number	Volts (VDC)	Watts (W)	Light source	Input volts (VAC)	Color
CEREBRUM-6	24	144 (1 hour)	LED	120/277/347	Black

ADD-ON

Part number	Description
CER-6-BATT	Battery pack and cabinet extension for Cerebrum (order separately)

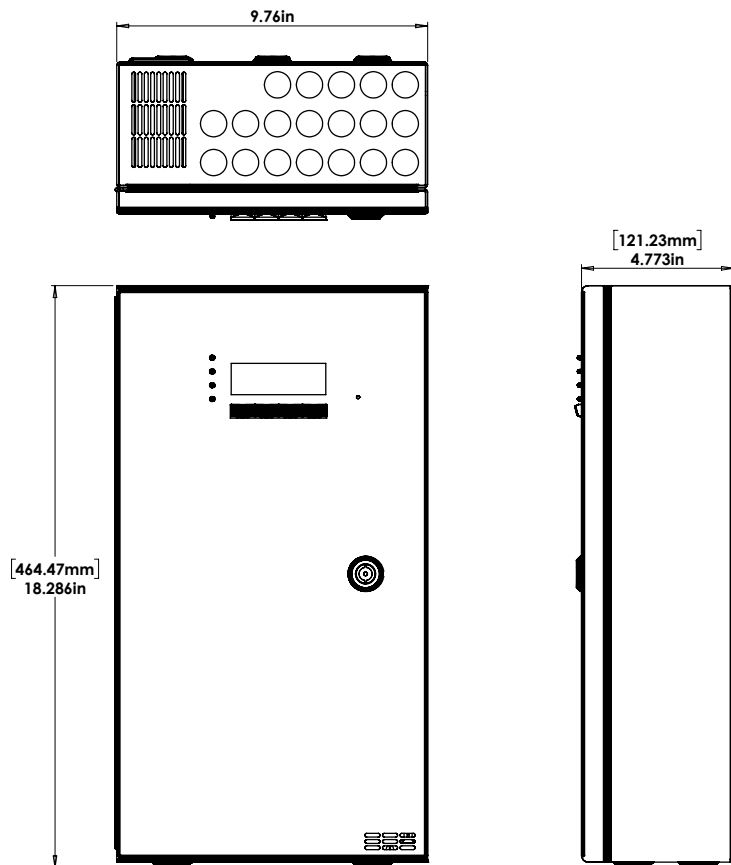
MODEL RATINGS¹

	60 min	120 min	180 min	720 min
CEREBRUM-6	144 W	96 W	60 W	24 W
CEREBRUM-6 + CER-6-BATT ²	180 W	180 W	180 W	72 W

¹Consult your representative for more details

²Power supply limited to 180 W

DIMENSIONS





RMS

STEEL RUNNING MAN SIGN

Specification grade sign

The clean lines of the RMS series of commercial steel signs present a fully modern appearance. The high quality steel housing eliminates light leaks and provides superior illumination and uniformity. The RMS series offers a wide variety of options.



cerebrum
compatible



quick
ship



LED
fixture



ICES
005



Energy Verified
Energie Vérifiée

Series	Nbr of faces	Color	DC Volts* (V DC)	Options
RMS	0 - Universal faces 1 - Single face 2 - Double face	WH - White (standard) BK - Black GY - Grey SP - Custom color (please specify)	UDC - Universal DC backup voltage from 6 to 24 IB - Self-powered for 90 minutes IB1 - Self-powered for 120 minutes CER - Cerebrum driver	AT ¹ , BO , K5 , PGD , OP , TP , WO , WGD ² 0 - No indicators (double face only) ↓ ↑ ↗ ↘ ↙ ↘ D U UR DR DL UL Note: Indicators option available for single & double option only.

* If AC only is required, select the UDC option and do not connect the DC wires when installing.

¹ AT available with IB and IB1.

² Specify mounting.

RMV

VANDAL RESISTANT

NBC2015 Compliant



LED
fixture



ICES
005



cerebrum
compatible

The RMV series is designed to withstand extremely abusive environments like correctional facilities and schools. The signs are constructed from 16 gauge steel with an integral Lexan shield. Available in AC only, AC/DC and internally self-powered versions.



Series	Nbr of faces	Mounting	Color	DC Voltage* (V DC)	Options
RMV	1 - Single face 2 - Double face	CM - Ceiling mount WM - Wall mount EM - End mount	WH - White (standard) SP - Custom color (please specify)	UDC - Universal DC backup voltage from 6 to 24 IB - Self-powered for 90 minutes IB1 - Self-powered for 120 minutes CER - Cerebrum driver	AT ¹ , BO ² , HVC, OP, WGD ³ , WO ² O - No indicators (double face only) ↓ ↑ ↗ ↘ ↙ ↘ D U UR DR DL UL Note: Indicators option available for single & double option only.

*If AC only is required, select the UDC option and do not connect the DC wires when installing.

¹ T available with IB and IB1.

² Available only with OP option.

³ Specify mounting.





RMEA

EDGELIT

Universal Mounting

The RMEA series of commercial edgelit signs provides interiors with a clean, distinguished appearance. Standard universal surface mount with optional recessed backbox assembly. The RMEA series is available in AC only, AC/DC and internally self-powered versions.



Series	Nbr of faces	Mounting	Color	DC Volts (VDC)	Options
RMEA	0 - Universal faces 1 - Single face 2 - Double face	Blank - Universal mount PM - Pendant mount	WH - White BK - Black BA - Brushed aluminum ¹	UDC - Universal DC backup voltage 6, 12 or 24 selectable ² NDC - AC only IB - Self-powered for 90 minutes ² IB1 - Self-powered for 120 minutes ² CER - Cerebrum driver	GEN - Generators and inverters compatible (for NDC only) ³ CCWH - Canopy and endcaps white (for brushed aluminum only) 0 - No indicators (double face only) ↓ ↑ ↗ ↘ ↙ ↘ D U UR DR DL UL Note: Indicators option available for single & double option only.

¹ Black end caps and canopy (standard).

² UDC, IB & IB1 versions not intended for installation on generators.

³ GEN option is mandatory with NDC

RMR

RAINSTORM

NBC2015 compliant
NEMA4X

The RMR series of NEMA4X and EEMAC4X rated weatherproof signs is designed to operate in extreme environments. The fully gasketed housing is suitable for outdoor and wash-down locations. Available in AC only, AC/DC and internally self-powered versions.



LED
fixture



wet
location



ICES
005



cerebrum
compatible



Series	Nbr of faces	Mounting	Frame color	Face color	DC Volts (V DC)*	Options
RMR	1 - Single face 2 - Double face	CM - Ceiling mount WM - Wall mount EM - End mount PM - Pendant mount	GY - Grey	GY - Grey (standard) BK - Black (indoor only)	UDC - Universal DC backup voltage 6, 12 and 24 IB - Self-powered for 90 minutes IB1 - Self-powered for 120 minutes CER - Cerebrum driver	AT ¹ , BO, OP, TP, WGD ² , WO 0 - No indicators (double face only) ↓ ↑ ↗ ↘ ↙ ↘ D U UR DR DL UL

*If AC only is required, select the UDC option and do not connect the DC wires when installing.

¹ AT available with IB and IB1.

² Specify mounting.





RMXL

EXTRUDED ALUMINUM

NBC2015 Compliant

120/277/347 V AC Input

The clean lines of the RMXL series of commercial extruded aluminum signs present a fully modern appearance. The extruded aluminum provides for a rigid, durable and lightweight sign. Available in AC only, AC/DC and internally self-powered versions.



cerebrum
compatible



LED
fixture



ICES
005



Energy Verified
Energie Vérifiée



Series	Nbr of faces	Color	DC Voltage* (V DC)	Options
RMXL	0 - Universal face 1 - Single face 2 - Double face	WH - White (standard) BK - Black GY - Grey BA - Brushed aluminum SP - Custom color (please specify)	UDC - Universal DC backup voltage from 6 to 24 IB - Self-powered for 90 minutes IB1 - Self-powered for 120 minutes CER - Cerebrum driver	AT ¹ , BO, K5, OP, PGD ² , TP, VS ² , WGD ² , WO 0 - No indicators (double face only) ↓ ↑ ↗ ↘ ↙ ↘ D U UR DR DL UL Note: Indicators option available for single & double option only.

*If AC only is required, select the UDC option and do not connect the DC wires when installing.

¹ AT available with IB and IB1.

² Specify mounting.

RMQ

THIN RUNNING MAN SERIES

Die Cast Aluminum

RMQ series of commercial decorative die cast aluminum exit signs are the perfect match of aesthetics and durability. The die cast construction produces an extremely rigid housing while the highly machined brushed housing lends a high-end look. The series has been designed to meet the C860 standard using energy efficient LEDs, with energy consumption as low as 1.9 W AC. Faceplates are hinged and snap into place for ease of installation.



LED
fixture



ICES
005



cerebrum
compatible



Energy Verified
Energie Verifiée



Series	Nbr of faces	Frame/back plate color	Face color	DC Volts* (V DC)	Options
RMQ	1 - Single face 2 - Double face	WH - White (standard) BK - Black BA - Brushed aluminum	WH - White (standard) BK - Black BA - Brushed aluminum	UDC - Universal DC backup voltage 6, 12 and 24 IB - Self-powered for 90 minutes IB1 - Self-powered for 120 minutes CER - Cerebrum driver	AT ¹ - Automatic test Self-diagnostic K5 - 1/2" Knockout for pendant mount PGD - Lexan Guard (separate order) WGD ² - Wireguard (separate order) 0 - No indicators (double face only) ↓ ↑ ↗ ↘ ↙ ↘ D U UR DR DL UL

*If AC only is required, select the UDC option and do not connect the DC wires when installing.

¹AT available with IB and IB1.

²Specify mounting.





RMPS

PLASTIC RUNNING MAN

120/277/347 VAC

The RMPS series is suitable for property management and institutional applications, and is designed using durable and lightweight high impact thermoplastic. Available in AC only, AC & DC, and self-powered versions.



**quick
ship**



**cerebrum
compatible**



**LED
fixture**



Energy Verified
Energie Vérifiée

Series	Nbr of faces ¹ and mounting	Color	DC Output	Options
RMPS	0 - Universal 1 - Single face ¹ 2 - Double face ¹	WH - White	UDC - Universal DC backup voltage from 6 to 24 VDC IB - Self-powered for 90 minutes IB1 - Self-powered for 120 minutes CER - Cerebrum driver	WGD - Wireguard (separate order) ² 0 - No indicators (double face only) ↓ ↑ ↗ ↘ ↙ ↘ D U UR DR DL UL

¹ Unit comes standard as universal face. Single face or double face should only be specified when choosing nonstandard fibers.

² Specify mounting.

QUICK SHIP: Not all products are Quick Ship. To view our Quick Ship qualified products, please consult our Quick Ship Product Guide at stanprols.com/quick-ship-product-guide. Product availability is subject to change without notice. Please contact your Stanpro customer service representative to confirm inventory levels at time of order.

RMRN

“NOAH” WET LOCATION ANTI VANDAL RUNNING MAN 120/277/347 VAC Input

The RMRN series of wet location anti vandal running man is designed to operate in extreme environments. The unit, designed using a polycarbonate housing, maintains its sealed interior with a continuous integral gasket. As well, LED pilot light and test switch are sealed type. Available in AC/DC and internally self-powered versions.



LED
fixture



ICES
005



Series	Nbr of faces	Mounting	Color	DC Volts (VDC)	Options
RMRN	1 - Single face 2 - Double face	Blank - Universal	BK - Black WH - White	UDC - Universal DC backup voltage from 6 to 24 IB - Self-powered for 90 minutes IB1 - Self-powered for 120 minutes CER - Cerebrum driver	AT ¹ - Auto test standard CW ² - Cold Weather at -20°C to +40°C 0 - No indicators (double face only) ↓ ↑ ↗ ↘ ↙ ↘ D U UR DR DL UL

¹ Available only with IB & IB1. Mandatory with IB & IB
² Available only with IB.



N

PAR18/MR16 MINI REMOTE

Plastic Construction

Single, Double, Triple, or Quad

6 V, 12 V & 24 V Lamps

LED, Quartz & Tungsten

The N series of commercial thermoplastic PAR18/MR16 remotes provides the perfect balance of value and performance. The heads are fully adjustable and both tilt and swivel are lockable. The standard canopy is designed to mount directly to typical electrical junction boxes. Available in 6 V, 12 V and 24 V models, utilizing either LED, tungsten or quartz halogen lamps.



**cerebrum
compatible**



**quick
ship**



**LED
fixture**



**ICES
005**

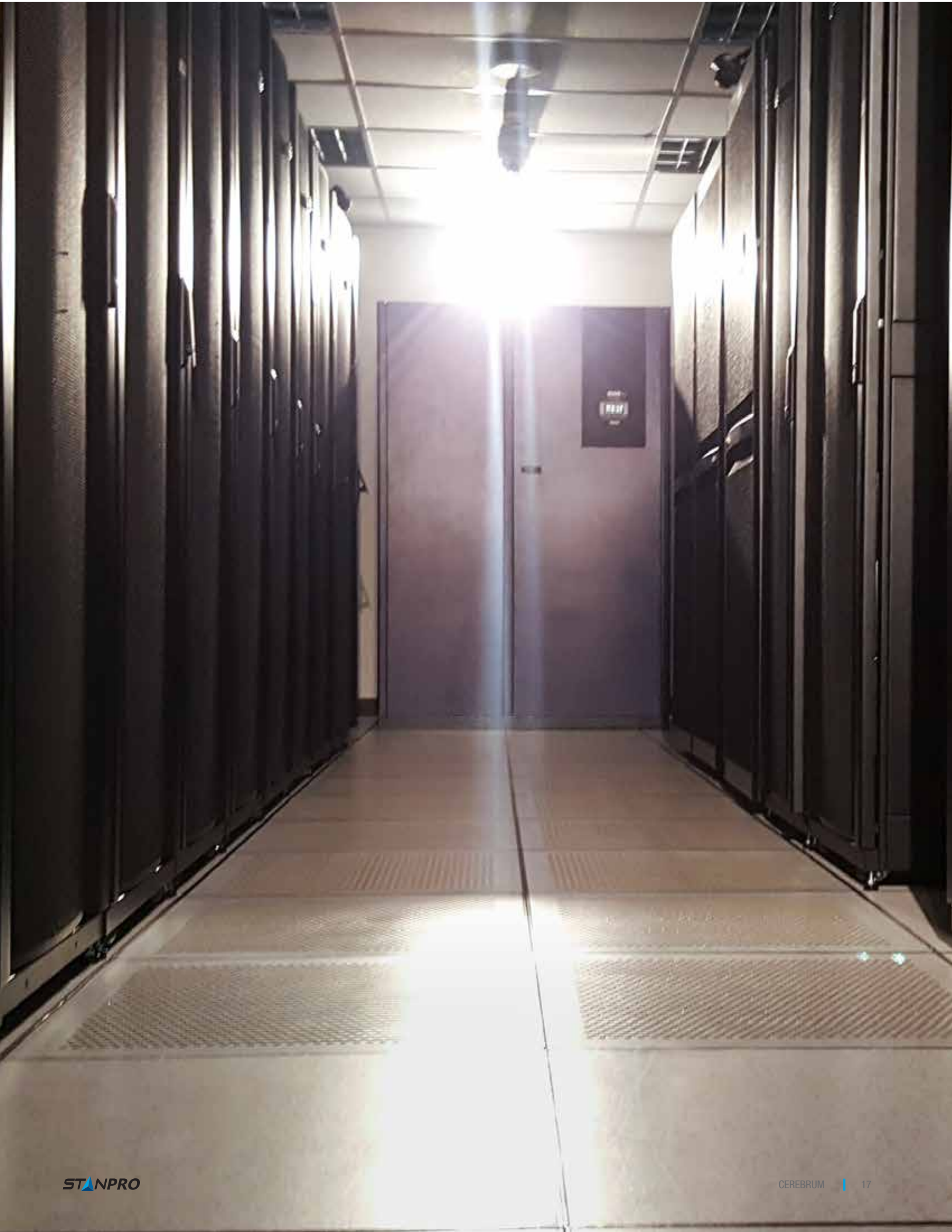


Series	Nbr of heads	Volts (V DC operational)	Watts (W)	Lamp type	Color	Options
N	1 - Single head	06-12V - 6 to 12	3W - 3	LJ - LED	WH - White (standard) BK - Black	LCP, TP, WGD
	2 - Double head		4W - 4			
	3 - Triple head		5W - 5			
	4 - Quad head (requires 12" dia. canopy)	12-24V - 12 to 24	6W - 6	LA - LED		
			7W - 7			
	1 - Single Head	24V - 24	4W - 4	LR - LED		
			5W - 5	LA - LED		
2 - Double Head	CER - Cerebrum driver	5W - 5	LJ - LED			
2 - Double Head	CER - Cerebrum driver	2.5W - 2.5	5W - 5			
		5W - 5				

ORDERING GUIDE - INCANDESCENT

Series	Nbr of heads	Volts (V DC)	Lamp type	Color	Options
N	1 - Single head	06V - 6	See lamp selection chart below	WH - White (standard) BK - Black	LCP - Less Canopy WGD - Wireguard (order separately)
	2 - Double head	12V - 12			
	3 - Triple head	24V - 24			
	4 - Quad head (require 9.53" dia. canopy)				

Data is based upon tests performed in a controlled environment. Actual performance can vary depending on operating conditions. All products are subject to change or may be discontinued any time without notice.





Printed in Canada.

© 2021 STANDARD Products Inc. All Rights Reserved.

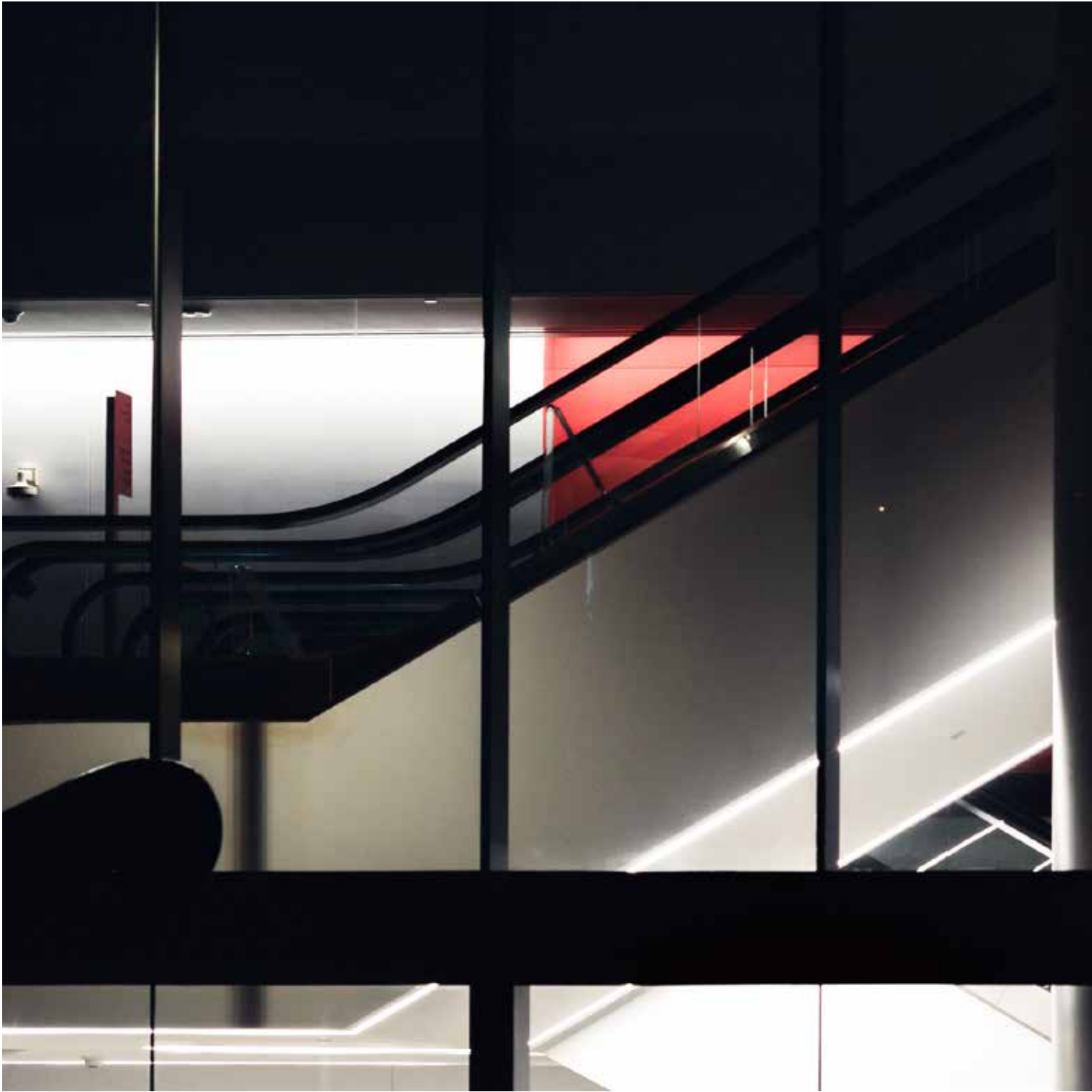
Data is based upon tests performed in a controlled environment.
Actual performance can vary depending on operating conditions.
All products are subject to change or may be discontinued any time without notice.

For the latest version, please refer to our website.

www.standardpro.com



STANPRO



standardpro.com

STANPRO