

## MULTI-MOUNT EDGELIT LED CEILING LUMINAIRE 3 CCT SELECTABLE Surface Or Suspended

Minimalist and versatile, our Multi-Mount EDGELIT LED Ceiling luminaire blends modern simplicity with well thought-out features. This luminaire is an ideal lighting solution for both commercial and decorative residential applications.



6

damp  
location



dimmmable  
fixture



### ■ Color Selectable

With an integrated 3 color temperature selection (3 000/3 500/4 000 K), our Multi-Mount EDGELIT LED Ceiling Luminaire is a versatile solution that allows to choose the color temperature that is right for the designated application.

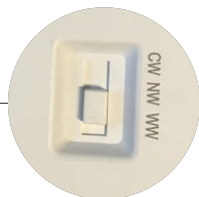
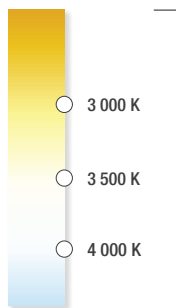
### ■ Versatile lighting solution

Honoring its name, this luminaire stands out by the mounting versatility it provides - install it flush mounted or suspended when used with the adjustable stem kit, available as accessory.

### ■ Accentuate any space

Available in black or white finish, this luminaire has a minimalist look that is perfect for any commercial or residential decorative applications such as kitchens, offices, living rooms and more!

# More than a simple EDGELIT!



• The CCT switch is placed on the back of the luminaire

• Slim luminaire with 1" profile



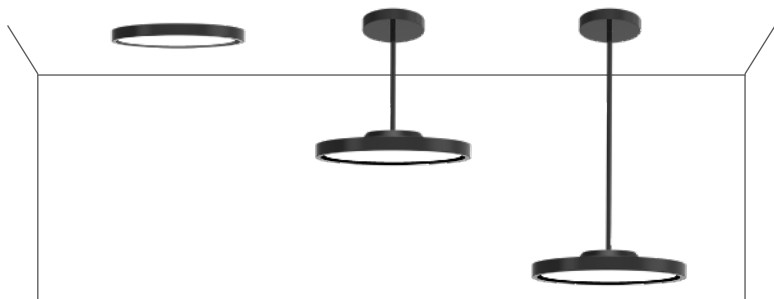
• Easy twist-lock installation

• Available in 16"

• Polycarbonate housing in white and black finish

## Mounting versatility

Enjoy this versatile luminaire mounted in 3 distinct ways – whether it be flush mounted (standard) or, semi-flush and pendant mounted (when used with the stem kit), the Multi-Mount EDGELIT series has the flexibility to complement any application.



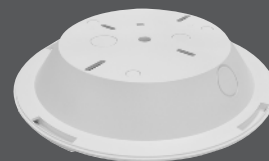
## Compatible stem suspension kit available!

Available in black or white finish, our compatible stem kit offers 5 connectible stems for an adjustable suspended installation going from 6" (15 cm) length up to 53" 1/8 (135 cm).

### Stem kit content



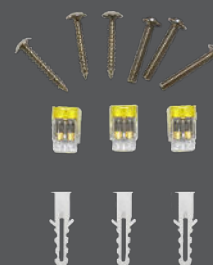
Canopy - 1 unit



Mounting bracket - 1 unit

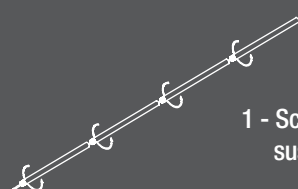


Stem lengths:  
6" (15 cm) - 1 unit  
12" (30 cm) - 4 units

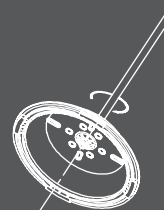


Hardware bag - 1 unit

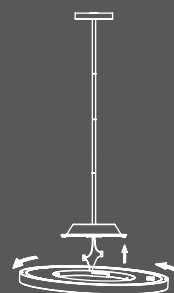
### Easy Assembly



1 - Screw in the stems to fit the desired suspension length



2 - Place the mounting bracket at the bottom of the stem and secure the bracket with the M10 nut



3 - Twist-lock to secure the luminaire to the mounting bracket

# Summary Specification Table

Order code	Model number	Watts (W)	Volts (VAC)	Color temp. (K) <sup>1</sup>	Lumen output (lm) <sup>2,3</sup>	Efficacy (lm/W)	CRI	Life L70 (hrs) <sup>4</sup>	Beam angle (°)	Shape	Finish	Dimming (Yes/No)	Power factor ≥0.90	Master case qty 10
<b>3 CCT Selectable</b>														
<b>16"</b>														
69183	CLEG16-R30W-A-3CWH	30	120	3 000/3 500/4 000	2 120	71	80+	50 000	120	Round	White	Yes	≥0.90	10
69184	CLEG16-R30W-A-3CBK	30	120	3 000/3 500/4 000	2 120	71	80+	50 000	120	Round	Black	Yes	≥0.90	10

<sup>1</sup> Typical color temperature range: +/- 5 %.

<sup>2</sup> Lumen values are derived from Energy Star reported data. Initial lumens range: +/- 10 %.

<sup>3</sup> Life hours are derived from IESNA LM-80-08 testing report and projected per IESNA TM-21-11 extrapolations.

## Compatible accessories

Order code	Model number	Type	Finish	Length (in)	Compatible with	Master case qty	Figure
69185	4.4FT STEM SUSP. KIT FOR CLEG16 WHITE	Stem suspension kit - adjustable length	White	6 - 53 1/8	69183	10	A
69186	4.4FT STEM SUSP. KIT FOR CLEG16 BLACK	Stem suspension kit - adjustable length	Black	6 - 53 1/8	69184	10	B

<sup>1</sup> Includes mounting bracket, canopy, stem and wires assembly and, hardware bag.

