

ALK-L GEN 2 Area Light

The ALK-L series delivers exceptional performance in a slim modern design. With an assortment of mounting options and distribution types, it can be used in multiple applications. This high-end area light is a great addition to any commercial or industrial area lighting application.



■ 8 Lumen Packages Available Highly Customizable!

With its wide selection of Lumen packages, Color temperatures, and distribution types, this area light is the perfect solution to all your project needs.

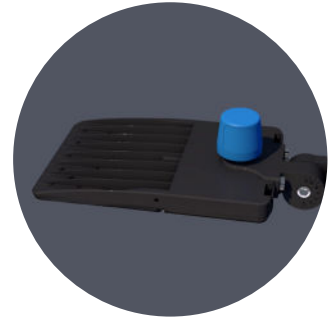
■ Multiple Optics and Distribution Type

This luminaire is offered in Type III, IV and V with rotatable lenses to allow for light distribution in various directions.

■ Variety of Mounting Options

With a variety of mounting options to choose from, wall and pole mounting has never been made so easy!

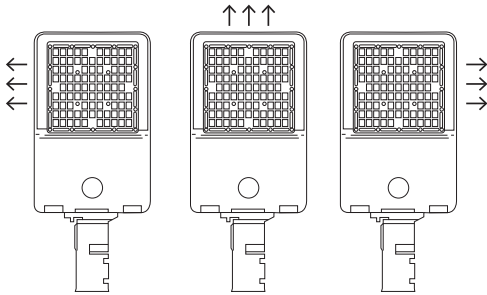
Area Light



- Polycarbonate Lens



- Comes standard with a 3 pin receptacle and a shorting cap. *Optional 7 pin receptacle available*



- Rotable Lenses for a customizable light distribution

- Optional occupancy sensor

- Black finish and paint options available

Mounting Options

**PA6 (square)
PA6R (round)**
POLE ARM



A
SPLIFFITER



AR
ADJUSTABLE ARM FOR
SQUARE POLE AND WALL MOUNT



TR
YOKE

