

FLB LED Flood Light GEN 4

This versatile family of highly efficient and powerful LED flood lights features a modern design, wide range of lumen packages, selectable power switches and selectable color temperature options. Typical applications include general lighting of grounds, storage yards, car dealerships, parking areas as well as flood lighting of signs and building facades.



■ Color and Power Selectable¹

An all-in-one LED Flood light solution offering ultimate versatility, with the ability to change the color temperature (3 000/4 000/5 000 K) and lumen output for a variety of projects and applications. It is an ideal cost-effective solution to reduce stocking inventory.

■ Optics

This series features NEMA type 7Hx6V or 7Hx7V flood optics to best suit your lighting layout needs.

■ Universal mountings

With a variety of universal mounting options to choose from, wall, ground and pole mounting has never been made so easy!

¹ Available on some configurations. Consult spec sheet for more details.

Flood-in-one solution

- Aluminum heat sink

- Clear polycarbonate Lens



- CCT Selectable Switch
3 000/4 000/5 000 K



- Power Selectable Switch
50/80/100/150 W or
150/200/240/300 W

Technical Specifications



100 W
13 127 - 13 889 lm



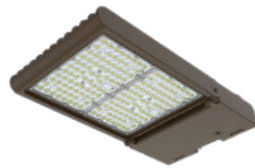
150 W
20 649 - 21 518 lm



230 W
31 954 - 34 040 lm



300 W
40 569 - 42 098 lm



400 W
57 654 - 58 148 lm



50/80/100/150 W
6 800 - 19 200 lm

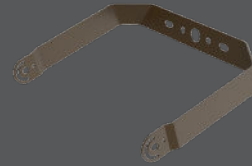


150/200/240/300 W
22 400 - 38 000 lm

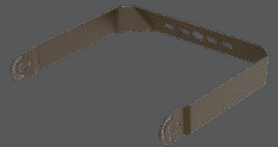
Universal mountings

Field interchangeable mountings that allow for easy and quick installation.

68569
Yoke for FLBS-FLBM



68570
Yoke for FLBL-FLBX



68571
Slipfitter



68572
Square/round
Pole arm



68573
Trunnion



68717
Slipfitter and Wall
mount adapter

